

DELHI TRANSCO LTD.

STATE LOAD DISPATCH CENTER

PROGRESS REPORT

AUGUST 2014

S. No.	CONTENTS	Page No.
1.	Salient Features of Delhi Power System	3
2.	Performance of Generating Stations within Delhi	4
3.	Details of Outage of Generating Stations within Delhi	5-14
4.	Allocation of Power to Delhi from unallocated quota of central sector	15-18
5.	Allocation of Power to Discoms	19
6.	Power Availability Demand Position of Delhi at the time of occurrence of Peak Demand	20
7.	Power Availability Demand Position of Delhi at the time of occurrence of Maximum Un-Restricted Demand	21
8.	Source wise scheduled drawl from grid and Availability within Delhi	22-24
9.	Shedding Details	25-28
10.	Load Curve for the Day of Peak Demand	29
11.	Load Curve for the day of occurrence of Maximum Un-Restricted Demand	30
12.	Load Curve for the day of Maximum Energy Consumed	31
13.	Load Curve for the day of Maximum Un-Restricted Energy Demand	32
14.	Load Duration Curve	33
15.	Frequency Analysis	34
16.	Voltage Profile for significant 220kV Sub-Stations	35
17.	Voltage Profile for significant 400kV Sub-Stations	36-37
18.	Details of Capacitors Installations in Delhi	38-43
19.	Tripping Details of 400/220 KV System in Delhi Power System	44-49
20.	Details of Under frequency Relay operations in Delhi Power System	50

SALIENT FEATURES OF DELHI POWER SYSTEM

Sr. No.	Features	AUGUST 2013	AUGUST 2014
1	Effective Generation Capacity within Delhi in MW		
	Rajghat Power House	135	135
	Gas Turbine	270	270
	Pragati Power Corporation Ltd.	330	330
	Badapur Thermal Power Station	705	705
	Rithala GT	108	108
	Bawana	685	1372
	TOWMCL	16	16
	Total	2249	2936
2	Maximum Unrestricted Demand (MW)	4993	5589
	Date	26.08.2013	27.08.2014
	Time	15.46.11	22.49.14
3	Peak Demand met (MW)	4988	5507
	Date	26.08.2014	27.08.2014
	Time	15.46.11	22.49.14
4	Peak Availability (MW)	4662	5397
5	Shortage (-) / Surplus (+) in MW	(-)-326	(-) 110
6	Percentage Shortage (-) / Surplus (+)	(-) 6.54	(-) 2.00
7	Maximum Energy Consume in a day (Mus)	96.289	116.033
8	Energy Consumed during the month	2655.918	3211.821
9	Load Shedding in Mus		
A)	Due to Grid Restrictions		
i)	Under Frequency Relay Operations	0.008	0.000
ii)	Manual Load shedding from DTL S/Stns.	0.000	0.000
iii)	Load Shedding due to low frequency / Low Voltage / TTC/ATC Violation		
	NDPL	0.064	1.018
	BRPL	0.686	3.315
	BYPL	0.210	1.801
	NDMC	0.000	0.075
	MES	0.000	0.003
iv)	Due to transmission Constraints in Central Sector	0.000	0.000
	Total due to Grid Restriction	0.968	6.212
B)	Due to Constraints in System in Mus		
	DTL	1.982	2.553
	NDPL	0.102	0.868
	BRPL	1.114	1.267
	BYPL	0.115	0.707
	NDMC	0.003	0.016
	MES	0.000	0.000
	Other Agencies	0.011	0.129
	Total	3.327	5.540
11	Grand Total in Mus	4.295	11.752

2. PERFORMANCE OF GENERATING STATIONS WITHIN DELHI DURING AUGUST 2014

A) For the month of August 2014

All Figures in MUs

S. No	Stations	Gross Generation	Aux. Consumption	Net Generation	Availability (%)	Backing Down
1.	RPH	49.613	7.633	41.980	55.00	7.607
2.	GT	72.415	2.936	69.479	65.80	54.965
3.	PPCL	209.264	5.381	203.883	89.54	9.606
4.	BTPS	290.062	29.89	260.172	71.83	72.022
5.	Rithala	0.000	0.062	-0.062	89.17	61.008
6.	Bawana	259.992	9.355	250.637	102.46	699.009
7.	Towmcl	10.384	1.580	8.804	--	--
	TOTAL	891.73	56.837	834.893	--	904.217

B) For the Year 2013-14 (Upto August 2014)

Power Station	Effective Capacity (MW)	Net Generation in MUs for Aug 2014	Availability (%) for Aug 2014	PLF (%) for Aug 2014	Cumulative Generation in MUs upto Aug 2014 for the year 2014-15	Cumulative Availability in % upto Aug 2014 for the year 2014-15	Cumulative PLF in % upto Aug 2014 for the year 2014-15
RPH	135	41.980	55.00	46.47	246.713	68.54	55.76
GT	270	69.479	65.80	37.59	435.246	59.63	45.38
PPCL	330	203.883	89.54	85.51	743.306	65.51	63.20
BTPS	705	260.172	71.83	56.41	1576.484	84.01	67.89
Rithala	108	-0.062	89.17	0	-0.296	89.17	0
Bawana	902	250.637	102.86	53.81	640.022	102.14	20.84
Towmcl	16	8.804	--		51.553	--	--
TOTAL	2466	834.893	--	--	3693.028	--	--

1. RPH

Unit No	Capacity in MW	Outage		Synchronization		Reason of Outage
		Date	Time	Date	Time	
1	67.5	04.11.13	12.00	16.04.14	10.50	Stopped due to low demand and high frequency
		04.05.14	10.35	07.05.14	03.10	Boiler tube leakage
		07.05.14	15.35	07.05.14	16.20	Loss of fuel
		07.05.14	16.40	07.05.14	19.25	Loss of fuel
		10.05.14	22.30	10.05.14	23.20	Flame failure
		13.05.14	10.45	14.05.14	15.10	Stopped due to low demand and high frequency
		14.05.14	15.40	14.05.14	16.25	Drum level low
		14.05.14	17.30	14.05.14	17.55	Excitation failure
		22.05.14	09.20	22.05.14	10.45	Turbine trip
		22.05.14	22.25	23.05.14	00.50	Flame failure
		23.05.14	22.30	24.05.14	00.00	Turbine trip
		24.05.14	00.50	24.05.14	01.20	Furnance pressure very high
		30.05.14	16.55	31.05.14	00.00	Unit tripped due to grid disturbance
		31.05.14	00.15	31.05.14	02.30	Drum level low
		09.06.14	13.15	09.06.14	19.25	Unit tripped due to 220kV supply fail
		21.06.14	18.00	21.06.14	20.05	Unit tripped due to 220kV supply fail
		23.06.14	01.40	23.06.14	04.05	Unit tripped due to 220kV supply fail
		25.06.14	05.00	25.06.14	09.25	Unit tripped due to 220kV supply fail
		02.07.14	14.05	02.07.14	16.10	Unit tripped due to 220kV supply failure
		03.07.14	12.05	05.07.14	17.15	Boiler tube leakage
		18.07.14	03.20	18.07.14	06.20	Tripped due to turbine trip
		12.08.14	01.20	16.08.14	20.30	Stopped due to low demand and high frequency
		17.08.14	11.30	19.08.14	23.00	Stopped to attend boiler tube leakage
		22.08.14	10.05	22.08.14	12.20	Unit tripped due to flame failure
23.08.14	12.20	23.08.14	22.20	Desynchronised due to heavy water leakage from spary line.		

Unit No	Capacity in MW	Outage		Synchronization		Reason of Outage
		Date	Time	Date	Time	
2	67.5	15.03.14	18.00	16.04.14	04.40	Stopped due to low demand and high frequency
		27.04.14	19.30	05.05.14	01.25	Desynchronized on ETD due to fire hazard at boiler corder no. 4
		14.05.14	18.45	17.05.14	17.50	Stopped due to low demand and high frequency
		30.05.14	16.55	30.05.14	23.30	Unit tripped due to grid disturbance
		04.06.14	00.20	05.06.14	00.45	Boiler tube leakage
		07.06.14	11.00	07.06.14	12.05	Turbine trip
		09.06.14	13.15	09.06.14	15.50	Unit tripped due to 220kV supply fail
		21.06.14	18.00	21.06.14	22.50	
		23.06.14	01.40	23.06.14	08.30	
		25.06.14	05.05	25.06.14	07.50	
		02.07.14	14.05	02.07.14	15.50	Tripped due to condenser vaccum low
		05.07.14	10.10	06.07.14	00.25	
		06.07.14	12.15	13.07.14	00.10	Boiler tube leakage
		16.07.14	10.30	16.07.14	11.05	Unit tripped due to UAT oil level low
		18.07.14	08.00	21.07.14	11.10	Boiler tube leakage
		06.08.14	18.10	08.08.14	24.00	Boiler tube leakage
		09.08.14	00.00	12.08.14	23.40	Stopped due to low demand and high frequency
22.08.14	18.00	30.08.14	00.50	Boiler tube leakage		

(B) Gas Turbine

Unit No	Capacity in MW	Outage		Synchronization		Reason of Outage
		Date	Time	Date	Time	
1	30	27.03.14	13.10	15.04.14	18.28	Stopped due to low demand and high frequency
		15.04.14	18.38	15.04.14	19.45	Machine tripped due to grid disturbance
		14.06.14	02.02	16.04.14	08.01	Stopped due to low demand and high frequency
		16.04.14	18.15	23.04.14	19.45	
		04.05.14	10.05	04.05.14	13.45	Stopped due to LTTH High
		25.05.14	03.31	26.05.14	18.02	Stopped due to low demand and high frequency
		27.05.14	12.16	28.05.14	20.11	
		30.05.14	16.55	30.05.14	17.30	Machine came on FSNL due to grid disturbance.
		02.06.14	03.27	02.06.14	05.55	Due to tripping of 20 MVA Tr. Machine tripped
		03.06.14	19.02	03.06.14	20.21	Due to tripping of 6.6 KV Bus Coupler machine came on FSNL
		09.06.14	13.12	09.06.14	13.42	Machine came on FSNL as the 220 KV Bus became dead at IP Ext end.
		13.06.14	23.10	14.06.14	01.45	Tripped on loss of excitation
		14.06.14	01.45	16.06.14	12.49	Stopped due to low demand and high frequency
		18.06.14	09.10	18.06.14	11.20	Tripped on loss of excitation
		21.06.14	17.56	21.06.14	18.48	Due to Heavy Jerk (Due to 220 KV Pragati-Sarita Vihar line tripped)
		25.06.14	05.00	25.06.14	06.10	Machine tripped due to failure of Grid
		25.06.14	14.55	25.06.14	15.10	Due to Jerk both 160 MVA Tx. Tripped
		30.06.14	05.02	30.06.14	06.05	machine tripped due to failure of auxiliary Supply
		30.06.14	13.32	30.06.14	17.06	Stopped as per SLDC as generation not required in OC mode
		02.07.14	14.02	02.07.14	14.58	Machine tripped due to both 160MVA Trfs. tripped from 220 KVA side.
		06.07.14	14.15	07.07.14	12.15	Stopped due to low demand and high frequency
		07.07.14	12.15	07.07.14	17.08	Machine could not be taken on load due to leakage of oil.
		09.07.14	17.20	10.07.14	17.10	Machine tripped due to tripping of AOP.
		10.07.14	17.35	10.07.14	18.34	Machine tripped due to loss of excitation.
		17.07.14	21.16	18.07.14	03.45	Stopped due to low demand and high frequency
		18.07.14	03.45	18.07.14	12.45	Due to failure of auxillary supply
		18.07.14	12.45	19.07.14	18.32	Stopped due to low demand and high frequency
		25.07.14	08.01	31.07.14	07.58	
		04.08.14	19:18	06.08.14	13:51	
		06-08-14	15:20	06-08-14	17:40	
07-08-14	09:46	19-08-14	11:40			
28-08-14	17:54	31-08-14	23:59			

Unit No	Capacity in MW	Outage		Synchronization		Reason of Outage
		Date	Time	Date	Time	
2	30	01.02.14	17.00	31.08.14	23.59	Machine stopped due to high vibration

Unit No	Capacity in MW	Outage		Synchronization		Reason of Outage
		Date	Time	Date	Time	
3	30	27.03.14	16.38	15.04.14	17.50	Stopped due to low demand and high frequency
		15.04.14	18.38	15.04.14	19.05	Machine tripped due to grid disturbance
		18.04.14	17.47	18.04.14	18.55	Tripped on electrical trouble normal shutdown
		06.05.14	11.00	06.05.14	15.05	Stopped due to LTTH High
		06.05.14	15.15	06.05.14	17.30	
		07.05.14	10.46	07.05.14	19.31	
		12.05.14	17.21	12.05.14	18.05	Tripped on loss of flame
		13.05.14	00.22	13.05.14	00.54	Stopped due to low demand and high frequency
		13.05.14	20.25	22.05.14	12.10	
		25.05.14	00.58	25.05.14	01.26	
		30.05.14	16.55	30.05.14	17.25	Due to trid disturbance machine came on FSNL
		04.06.14	14.47	04.06.14	16.10	Machine tripped due to Middle section of Base radiator punctured due to falling of angle from APRDS Floor
		09.06.14	13.12	09.06.14	13.36	Machine came on FSNL as the 220 KV Bus became dead at IP Ext end.
		20.06.14	21.02	30.06.14	12.50	Machine started but could not be taken on load due to failure of diesel Engine
		02.07.14	14.02	02.07.14	14.58	Machine came on FSNL both 160MVA Trfs. tripped from 220 KVA side.
		17.07.14	21.14	18.07.14	03.45	Stopped due to low demand and high frequency
		18.07.14	03.45	19.07.14	17.22	Due to failure of auxillary supply
		31.07.14	00.12	31.07.14	15.24	Machine tripped as both 160 MVA Tr-I & II tripped
		04-08-14	14:05	06-08-14	10:22	Stopped due to low demand and high frequency
06-08-14	15:22	16-08-14	14:45			
16-08-14	21:31	28-08-14	17:10			

Unit No	Capacity in MW	Outage		Synchronization		Reason of Outage
		Date	Time	Date	Time	
4	30	27.03.14	18.30	06.06.14	12.30	Machine is under shutdown for HGPI
		09.06.14	13.12	09.06.14	13.34	Machine came on FSNL as the 220 KV Bus became dea at IP Ext end.
		21.06.14	17.56	21.06.14	19.05	Came on FSNL due to tripping of 160 MVA Tr-1& II.
		25.06.14	05.01	25.06.14	06.45	Came on FSNL due to tripping of 160 MVA Tr-1& II.
		25.06.14	08.45	25.06.14	17.26	Machine could not be taken on load due Diode Rotating diode fault fault on protection panel.
		30.06.14	05.30	30.06.14	06.10	machine tripped due to failure of auxiliary Supply
		02.07.14	14.02	02.07.14	14.47	Machine came on FSNL both 160MVA Trfs. tripped from 220 KVA side.
		17.07.14	23.46	18.07.14	03.45	Machine tripped due to both 160MVA Trfs. tripped .
		18.07.14	03.45	18.07.14	12.42	Due to failure of auxillary supply
		29.07.14	09.45	31.07.14	03.14	Stopped due to low demand and high frequency
		31.07.14	04.50	31.07.14	06.35	Machine tripped as both 160 MVA Tr-I & II tripped
		04-08-14	19:09	06-08-14	10:28	Stopped due to low demand and high frequency
		06-08-14	13:01	16-08-14	14:47	
		16-08-14	21:32	27-08-14	11:08	

Unit No	Capacity in MW	Outage		Synchronization		Reason of Outage
		Date	Time	Date	Time	
5	30	12.04.14	09.50	12.04.14	10.41	Machine tripped due to grid disturbance
		15.04.14	18.38	15.04.14	18.48	
		07.05.14	13.30	13.05.14	18.50	Machine tripped due to LTTH High . After that it is not available due to problem in Diesel engine.
		25.05.14	00.58	25.05.14	01.30	Due to trid disturbance machine came on FSNL
		30.05.14	16.55	30.05.14	19.15	
		06.06.14	02.35	06.06.14	11.30	Stopped due to low demand and high frequency
		06.06.14	11.30	06.06.14	17.15	Machine tripped on high Exhaust temperature.
		09.06.14	13.12	09.06.14	13.20	Machine came on FSNL as the 220 KV Bus became dea at IP Ext end.
		20.06.14	10.50	20.06.14	10.56	machine came on FSNL due to tripping of 7.5 MVA Auxiliary Transformer due to jerk.
		21.06.14	17.56	21.06.14	18.31	Machine came on FSNL as the 220 KV Bus became dea at IP Ext end.
		25.06.14	05.01	25.06.14	08.45	Machine came on FSNL as the 220 KV Bus became dea at IP Ext end.
		25.06.14	08.45	25.06.14	11.02	machine could not be taken on load due to starting device trip.
		25.06.14	14.45	25.06.14	18.09	Machine tripped as the 220 KV Bus became dea at IP Ext end.
		26.06.14	02.46	26.06.14	15.13	Stopped due to low demand and high frequency
		29.06.14	00.05	30.06.14	17.10	
		01.07.14	01.45	02.07.14	17.08	
		03.07.14	02.45	03.07.14	15.40	
		17.07.14	23.46	18.07.14	03.45	Machine tripped due to both 160MVA Trfs. tripped .
		18.07.14	03.45	18.07.14	12.52	Due to failure of auxillary supply
		31.07.14	00.12	31.07.14	00.46	Machine tripped as both 160 MVA Tr-I & II tripped
31.07.14	04.50	01-08-14	14:44	Machine tripped as both 160 MVA Tr-I & II tripped and not taken on load due to no demand from SLDC		
01-08-14	16:48	07-08-14	14:50			
31-08-14	13:45	31-08-14	23:59			

Unit No	Capacity in MW	Outage		Synchronization		Reason of Outage
		Date	Time	Date	Time	
6	30	12.04.14	09.50	12.04.14	09.55	Machine tripped due to grid disturbance
		15.04.14	18.38	15.04.14	18.50	
		30.05.14	16.55	30.05.14	17.23	Due to trid disturbance machine came on FSNL
		02.06.14	03.27	02.06.14	04.10	Due to tripping of 20 MVA Tr. Machine came on FSNL
		03.06.14	19.02	03.06.14	20.07	Due to tripping of 6.6 Bus Coupler machine came on FSNL
		06.06.14	02.32	06.06.14	11.30	Stopped due to low demand and high frequency
		06.06.14	11.30	06.06.14	18.00	machine not taken on load due to problem in Diesel Engine
		06.06.14	18.00	11.06.14	11.45	Stopped due to low demand and high frequency
		21.06.14	17.56	21.06.14	18.42	Machine came on FSNL as the 220 KV Bus became dea at IP Ext end.
		25.06.14	05.01	25.06.14	05.28	Machine came on FSNL as the 220 KV Bus became dea at IP Ext end.
		25.06.14	14.45	25.06.14	15.10	Came on FSNL due to tripping of 160 MVA Tr-1& II.
		26.06.14	02.47	26.06.14	18.02	Stopped due to low demand and high frequency
		29.06.14	00.02	30.06.14	17.41	
		01.07.14	01.50	02.07.14	17.01	
		03.07.14	02.45	03.07.14	11.25	
		03.07.14	15.52	04.07.14	17.10	
		17.07.14	23.46	18.07.14	01.56	Machine came on FSNL both 160MVA Trfs. Tripped.
		18.07.14	02.10	18.07.14	13.29	Due to failure of auxillary supply
		20.07.14	08.16	22.07.14	11.14	Stopped due to low demand and high frequency
		29.07.14	09.45	04-08-14	11:14	
05-08-14	03:07	05-08-14	09:43			
30-08-14	09:15	31-08-14	23:59			

Unit No	Capacity in MW	Outage		Synchronization		Reason of Outage
		Date	Time	Date	Time	
STG-1	30	27.03.14	13.20	15.04.14	23.36	Stopped due to low demand and high frequency
		15.04.14	23.39	16.04.14	00.38	Gen. class A trip
		16.04.14	00.52	16.04.14	12.20	
		16.04.14	16.20	16.04.14	22.00	
		16.04.14	22.00	23.04.14	22.54	Stopped due to low demand and high frequency
		24.04.14	02.30	24.04.14	04.02	Turbine shaft vibration very high at bearing no 3
		24.04.14	05.30	24.04.14	11.35	
		26.04.14	14.40	26.04.14	15.22	
		01.05.14	20.40	02.05.14	05.45	Machine manually tripped due to heavy abnormal sound in CEP
		04.05.14	10.10	04.05.14	15.30	G.T. stopped due to LTTH High, so STG stopped
		06.05.14	17.20	06.05.14	21.30	Machine tripped due to Oil pressure problem
		12.05.14	22.18	12.05.14	23.10	Tripped on Trip oil pressure very low
		14.05.14	12.05	14.05.14	14.58	Tripped on Class A relay and 40G relay operated
		25.05.14	00.58	25.05.14	03.30	Tripped due to grid disturbance
		25.05.14	03.30	25.05.14	21.30	machine under shutdown due to truning gear problem
		25.05.14	21.30	26.05.14	21.05	Stopped due to low demand and high frequency
		27.05.14	08.46	27.05.14	17.30	Machine tripped due to low vacuum
		27.05.14	17.30	28.05.14	23.52	Stopped due to low demand and high frequency
		29.05.14	09.20	29.05.14	10.07	Tripped on trip oil pressure very low
		29.05.14	12.38	29.05.14	14.04	
		30.05.14	16.55	30.05.14	19.05	Tripped due to grid disturbance
		02.06.14	03.27	02.06.14	07.03	Due to tripping of 20 MVA Tr. Machine tripped
		03.06.14	19.02	03.06.14	22.07	Due to tripping of 6.6 Bus Coupler machine tripped
		09.06.14	13.12	09.06.14	14.40	Machine came on FSNL as the 220 KV Bus became dead at IP Ext end.
		13.06.14	23.10	14.06.14	02.15	Machine tripped due to tripping of GT#1 on loss of Excitation.
		14.06.14	02.15	16.06.14	15.18	Stopped due to low demand and high frequency
		18.06.14	09.10	18.06.14	12.50	Machine tripped due to tripping of GT#1 on loss of Excitation.
		20.06.14	10.50	20.06.14	17.20	machine tripped due to tripping of 7.5 MVA Auxiliary Trr due to jerk.
		21.06.14	17.56	21.06.14	20.28	Due to Heavy Jerk,GT and STG tripped
		25.06.14	05.01	25.06.14	07.40	Due to Jerk machine tripped
		25.06.14	14.45	25.06.14	16.13	Due to Jerk both 160 MVA Tx. Tripped
		30.06.14	05.02	30.06.14	23.56	Machine tripped due to tripping of Auxilairy Transformer.
		01.07.14	12.13	01.07.14	13.10	Machine tripped due to jerk,bus coupler of 6.6KV bus bar tripped
		02.07.14	14.02	02.07.14	16.00	Machine tripped due to both 160MVA Trs. tripped
		06.07.14	14.15	07.07.14	12.15	Stopped due to low demand and high frequency
		07.07.14	12.15	07.07.14	19.30	Machine could not be taken on load due to non availability of GT#1.
		09.07.14	17.20	10.07.14	20.08	Machine tripped due to tripping of AOP of GT#1..
		12.07.14	21.40	12.07.14	22.30	Machine tripped due to failure of Auxiliary supply
		17.07.14	21.16	18.07.14	03.45	Stopped due to low demand and high frequency
		18.07.14	03.45	18.07.14	12.45	Due to failure of auxillary supply
		18.07.14	12.45	19.07.14	20.35	Stopped due to low demand and high frequency
		25.07.14	08.01	31.07.14	14.10	
04-08-14	19:11	06-08-14	19:33			
06-08-14	19:44	06-08-14	23:26	Stopped due to oil leakage in servo motor.		
06-08-14	23:32	12-08-14	12:00	Stopped due to oil leakage in servo motor.		
12-08-14	12:00	16-08-14	20:15	Stopped due to low demand and high frequency		
16-08-14	20:15	16-08-14	22:15	Problem in DC EOP		
16-08-14	22:15	19-08-14	14:55	Stopped due to low demand and high frequency		
28-08-14	17:54	31-08-14	23:59			

Unit No	Capacity in MW	Outage		Synchronization		Reason of Outage
		Date	Time	Date	Time	
STG -2	30	27.03.14	16.45	16.04.14	01.50	Stopped due to low demand and high frequency
		18.04.14	17.47	18.04.14	20.40	Machine tripped due to tripping of G.T.
		06.05.14	11.05	06.05.14	23.59	G.T. stopped due to LTTH high, so STG stopped
		07.05.14	10.46	07.05.14	23.10	
		12.05.14	17.22	12.05.14	19.05	Tripped due to tripping of G.T. (machine running on single G.T.)
		13.05.14	00.22	13.05.14	01.40	
		13.05.14	20.25	22.05.14	15.50	Stopped due to low demand and high frequency
		25.05.14	00.58	25.05.14	02.05	Tripped due to grid disturbance
		30.05.14	00.01	30.05.14	23.56	Machine not available due to non availability of DC EOP
		02.06.14	03.27	02.06.14	06.12	Due to tripping of 20 MVA Tr. Machine tripped
		04.06.14	10.20	04.06.14	10.38	Machine tripped due to malfunction of MS-14 valve
		04.06.14	14.47	04.06.14	16.48	STG tripped due to tripping of GT#3 .
		09.06.14	13.12	09.06.14	14.25	Machine tripped due to Grid disturbance
		17.06.14	18.43	17.06.14	19.28	Machine tripped on low vacuum as drum pr could not be maintained due to tripping of BFP-2A.
		20.06.14	10.50	20.06.14	11.50	Machine tripped due to tripping of Auxilairy Transformer.
		21.06.14	17.56	21.06.14	20.35	Due to Heavy Jerk,GT and STG tripped
		22.06.14	02.00	22.06.14	03.09	Machine tripped on Turbine RJB shaft vibration very high.
		25.06.14	05.01	25.06.14	08.45	Machine tripped due to failure of Grid
		25.06.14	08.45	25.06.14	19.28	machine could not be taken as both GT 3 & 4 were not available
		30.06.14	05.30	30.06.14	07.06	Machine tripped due to tripping of Auxilairy Transformer.
		01.07.14	12.13	01.07.14	14.01	Machine tripped due to jerk,bus coupler of 6.6KV bus bar tripped
		02.07.14	13.58	02.07.14	15.10	Machine tripped due to heavy jerk occurred in control room.
		12.07.14	11.24	12.07.14	12.45	Machine tripped on low vacuum as Auxiliary supply failed to CEP & BFP due to tripping of 6.6 KV Bus Coupler
		17.07.14	23.46	18.07.14	03.45	Machine tripped due to both 160MVA Trfs. tripped .
		18.07.14	03.45	18.07.14	15.53	Due to failure of auxillary supply
		23.07.14	09.19	23.07.14	11.38	Machine tripped due to malfunctioning of relay.
		31.07.14	00.12	31.07.14	08.40	Machine tripped as both 160 MVA Tr-I & II tripped
		04-08-14	19:11	06-08-14	15:00	Stopped due to low demand and high frequency
		06-08-14	15:00	08-08-14	10:45	Machine not taken due to problem in ESV
		08-08-14	10:45	16-08-14	19:15	Stopped due to low demand and high frequency
		16-08-14	19:15	26-08-14	21:45	Not available due to problem in ESV
		26-08-14	21:45	27-08-14	13:48	Stopped due to low demand and high frequency
		27-08-14	13:53	27-08-14	14:48	Tripped due to false alarm of housing vibration.

Unit No	Capacity in MW	Outage		Synchronization		Reason of Outage
		Date	Time	Date	Time	
STG-3	30	12.04.14	09.50	12.04.14	11.34	Machine tripped due to grid disturbance
		15.04.14	18.38	15.04.14	21.15	
		10.05.14	17.45	10.05.14	19.08	Machine tripped due to card malfunction
		25.05.14	00.58	25.05.14	02.15	Machine tripped due to grid disturbance
		30.05.14	16.55	30.05.14	18.25	
		02.06.14	03.27	02.06.14	05.07	Due to tripping of 20 MVA Tr. Machine tripped
		03.06.14	09.12	11.06.14	10.59	Machine stopped due to Fire at Bearing No.#1
		21.06.14	17.56	21.06.14	21.30	Due to Heavy Jerk,GT and STG tripped
		25.06.14	05.01	25.06.14	08.05	Machine tripped due to failure of Grid
		25.06.14	14.05	25.06.14	22.27	Machine tripped manually due to fire observed at bearing #1.
		26.06.14	01.51	26.06.14	21.43	
		27.06.14	02.50	27.06.14	11.45	
		27.06.14	12.56	28.06.14	12.00	
		28.06.14	13.10	05.07.14	21.43	Machine not available due to leakage of oil from bearing#1
		09.07.14	22.15	09.07.14	23.10	Machine tripped due to class-A relay tripped.Relays 86X
		12.07.14	11.24	12.07.14	12.03	Machine tripped on low vacuum as Auxiliary supply failed to CEP & BFP due to tripping of 6.6 KV Bus Coupler
		17.07.14	23.46	18.07.14	03.45	Machine tripped due to both 160MVA Trs. tripped .
		18.07.14	03.45	18.07.14	14.42	Due to failure of auxiliary supply
		31.07.14	00.12	31.07.14	03.52	Machine tripped as both 160 MVA Tr-I & II tripped
		31.07.14	04.50	31.07.14	23.59	Machine tripped as both 160 MVA Tr-I & II tripped and not taken on load due to no demand from SLDC
01-08-14	00:00	04-08-14	13:58	Stopped due to low demand and high frequency		
04-08-14	15:38	04-08-14	16:20	Machine tripped due to following relays operation-86GA1,86GB1 & Aux. relay-60AX		
04-08-14	16:35	04-08-14	19:03	Stopped due non availability of both BFPs.		
31-08-14	13:45	31-08-14	23:59	Stopped due to low demand and high frequency		

(C) PRAGATI

Unit No	Capacity in MW	Outage		Synchronization		Reason of Outage
		Date	Time	Date	Time	
1	104	24.04.14	17.21	24.04.14	21.14	Tripped On internal fault
		24.04.14	21.35	24.04.14	23.26	Tripped on internal fault
		28.04.14	00.00	28.04.14	10.00	Stopped due to less demand and high frequency
		28.04.14	10.00	18.06.14	15.06	Stopped for MI
		21.06.14	11.11	22.06.14	22.11	To attend leakage after planned shutdown of MI
		25.06.14	05.01	25.06.14	06.00	Tripped due to grid disturbance
		02.07.14	14.05	02.07.14	15.34	Tripped due to grid disturbance
		11.07.14	14.15	11.07.14	14.45	Tripped on internal fault
		21.07.14	20.13	21.07.14	21.50	
		22.07.14	15.26	22.07.14	16.11	
		23.07.14	00.00	23.07.14	04.24	Stopped to attend internal fault
		06.08.14	05.46	06.08.14	14.02	GT#1 Stopped to attend Internal Fault.
		15.08.14	10.00	15.08.14	21.00	GT#1 stopped by SLDC due to low power demand in Delhi
		15.08.14	21.00	16.08.14	07.46	GT#1 can not be started as per schedule due to Internal fault.
		16.08.14	13.21	17.08.14	03.24	GT#1 stopped to attend Internal Fault.
		19.08.14	11.19	19.08.14	11.48	
		19.08.14	12.42	19.08.14	13.40	

Unit No	Capacity in MW	Outage		Synchronization		Reason of Outage
		Date	Time	Date	Time	
2	104	08.04.14	08.58	27.04.14	22.31	Stopped for CI
		02.05.14	15.29	02.05.14	16.59	Tripped on internal fault
		04.05.14	15.37	04.05.14	16.39	
		25.05.14	00.58	25.05.14	02.50	Tripped due to grid disturbance
		14.06.14	13.35	14.06.14	14.06	Tripped on internal fault
		06.07.14	17.14	06.07.14	18.04	Tripped due to grid disturbance
		28.08.14	00.16	28.08.14	02.22	Tripped on internal fault

Unit No	Capacity in MW	Outage		Synchronization		Reason of Outage
		Date	Time	Date	Time	
STG	122	11.04.14	11.04	11.04.14	11.57	STG tripped on internal fault
		16.04.14	00.00	19.05.14	02.43	STG stopped for bearing inspection and condenser chemical cleaning.
		25.05.14	00.58	25.05.14	03.53	Tripped due to grid disturbance
		27.05.14	10.00	27.05.14	11.18	Tripped on internal fault
		30.05.14	16.56	30.05.14	18.12	Tripped due to grid disturbance
		09.06.14	13.12	09.06.14	13.57	
		13.06.14	02.36	13.06.14	03.41	
		16.06.14	11.41	16.06.14	12.23	Tripped on internal fault
		21.06.14	17.55	21.06.14	18.40	Tripped due to grid disturbance
		25.06.14	05.01	25.06.14	06.58	
		02.07.14	14.05	02.07.14	14.14	
		06.07.14	17.14	06.07.14	18.29	
		29.07.14	04.44	29.07.14	05.38	STG tripped on internal fault

(D) **BADARPUR THERMAL POWER STATION**

Unit	Capacity in MW	Outage		Synchronization		Reason of Outage
		Date	Time	Date	Time	
1	95	14.05.14	17.37	19.05.14	09.36	Stopped due to low demand and high frequency
		30.05.14	17.08	30.05.14	19.17	Tripped due to grid disturbance
		20.06.14	12.15	21.05.14	06.25	Water wall leakage
		17.07.14	23.22	18.07.14	05.33	Battery / DC System problem
		18.07.14	05.45	18.07.14	07.00	Bus dead, PA Fan rotating reverse direction
		18.07.14	16.19	28.07.14	08.09	Stopped due to low demand and high frequency
		22.08.14	02.30	26.08.14	00.00	Coal supply to bunkers
		26.08.14	00.00	31.08.14	23.59	Coal shortage

Unit	Capacity in MW	Outage		Synchronization		Reason of Outage
		Date	Time	Date	Time	
2	95	25.04.14	12.17	30.04.14	21.27	Stopped due to low demand and high frequency
		03.05.14	17.41	03.05.14	18.58	Tripped due to grid disturbance
		04.05.14	20.51	05.05.14	00.16	AVR & Excitation system
		22.05.14	09.27	31.05.14	12.13	CW Pum pit cleaning
		06.07.14	01.50	06.07.14	09.50	LT Bus problem
		06.07.14	09.50	08.07.14	06.25	ID Fan bearing problem
		24.07.14	02.48	24.07.14	04.34	Furnance disturbance
		30.07.14	20.12	31.07.14	23.59	Stopped due to low demand and high frequency
		01.08.14	22.00	26.08.14	00.00	Planned shutdown
		26.08.14	00.00	31.08.14	23.59	Coal shortage

Unit	Capacity in MW	Outage		Synchronization		Reason of Outage
		Date	Time	Date	Time	
3	95	11.03.14	21.15	01.05.14	13.55	Stopped due to low demand and high frequency
		03.05.14	17.41	03.05.14	19.43	Tripped due to grid disturbance
		10.05.14	15.55	11.05.14	17.22	Water wall leakage (Screentube LHS)
		30.05.14	17.08	30.05.14	20.05	Tripped due to grid disturbance
		30.05.14	21.22	30.05.14	22.41	AVR & Excitation system problem
		30.05.14	23.53	30.05.14	23.59	
		14.06.14	15.18	14.06.14	19.44	Generator Protection
		21.06.14	14.14	22.06.14	14.34	Water wall leakage
		26.06.14	20.20	28.06.14	01.18	Economizer tube leakage
		08.07.14	08.58	08.07.14	10.16	Furnance disturbance
		11.07.14	10.37	11.07.14	11.57	C&I induced (Axial shift)
		24.07.14	00.46	31.07.14	23.59	Stopped due to low demand and high frequency
		20.08.14	00.00	26.08.14	00.00	Coal supply to bunkars
		26.08.14	00.00	31.08.14	23.59	Major planned shutdown

Unit	Capacity in MW	Outage		Synchronization		Reason of Outage
		Date	Time	Date	Time	
4	210	05.03.14	02.11	21.04.14	15.16	Planned shutdown
		30.04.14	14.18	01.05.14	21.00	Economizer Tube leakage
		01.05.14	21.00	05.05.14	11.13	Tripped due to grid disturbance
		25.05.14	20.26	28.05.14	07.55	Reheater tube leakage
		30.05.14	17.08	30.05.14	22.08	Tripped due to grid disturbance
		04.08.14	11.49	04.08.14	17.52	Furnance disturbance
		22.08.14	09.42	22.08.14	13.02	Differential relay malfunction
		29.08.14	00.28	31.08.14	23.59	Coal shortage

Unit	Capacity in MW	Outage		Synchronization		Reason of Outage
		Date	Time	Date	Time	
5	210	23.04.14	00.02	25.04.14	05.05	APH outlet Baffles found broken
		12.05.14	04.02	14.05.14	08.27	APH Outlet deflectors broken
		07.06.14	22.47	08.06.14	23.22	CW Pump trip
		13.06.14	11.01	13.06.14	15.51	AVR & Excitation system problem
		17.06.14	23.06	19.06.14	04.00	Economizer tube leakage
		19.06.14	04.00	20.06.14	16.45	PA Fan lub oil system problem
		07.07.14	20.01	09.07.14	03.03	Water wall leakage
		27.07.14	16.38	30.07.14	02.50	Water wall leakage

(E) BAWANA CCGT POWER STATION

Unit	Capacity in MW	Outage		Synchronization		Reason of Outage
		Date	Time	Date	Time	
1	216	25.09.13	12.05	10.06.14	18.34	Stopped due to low demand and high frequency
		13.06.14	09.20	16.06.14	16.48	
		21.06.14	01.25	23.06.14	08.34	
		28.06.14	06.42	11.07.14	11.29	
		12.07.14	09.50	21.07.14	08.20	
		09.08.14	00.19	09.08.14	02.21	
		09.08.14	18.59	09.08.14	21.24	
		10.08.14	10.30	11.08.14	05.57	Failure of compressor bleed solenoid valve

Unit	Capacity in MW	Outage		Synchronization		Reason of Outage
		Date	Time	Date	Time	
2	216	11.10.13	10.40	29.04.14	16.10	Stopped due to low demand and high frequency
		29.04.14	16.37	29.04.14	17.52	Closure of gas valve
		08.05.14	18.55	22.05.14	15.59	Stopped due to low demand and high frequency
		23.05.14	18.26	04.06.14	14.18	
		12.06.14	16.56	18.06.14	18.34	Turbine compartment vent fan pressure switch malfunctioned backing down after wards due to low demand
		23.06.14	05.11	27.06.14	18.58	Purge valve 20 PG-2 misbehaviour, I-P Convertor found misbehaving trip, thereafter shutdown due to low demand and high frequency
		11.07.14	17.05	12.07.14	06.50	Stopped due to low demand and high frequency
		17.07.14	22.16	19.08.14	14.10	
		23.08.14	12.45	23.08.14	14.48	HGTMCC Supply failure
31.08.14	14.55	31.08.14	23.59	Stopped due to low demand and high frequency		

Unit	Capacity in MW	Outage		Synchronization		Reason of Outage
		Date	Time	Date	Time	
3	216	28.10.13	00.00	31.08.14	23:59	Commissioned on 28.10.13 and Stopped due to low demand and high frequency

Unit	Capacity in MW	Outage		Synchronization		Reason of Outage
		Date	Time	Date	Time	
4	216	27.02.14	00.00	31.08.14	23:59	Commissioned on 27.02.14 and Stopped due to low demand and high frequency

Unit	Capacity in MW	Outage		Synchronization		Reason of Outage
		Date	Time	Date	Time	
STG-1	254	11.10.13	10.50	23.05.14	00.30	Stopped due to low demand and high frequency
		23.05.14	18.28	04.06.14	14.18	
		12.06.14	17.13	12.06.14	18.03	LP drum level high
		13.06.14	09.20	16.06.14	21.21	Stopped due to low demand and high frequency
		23.06.14	05.11	23.6.14	12.18	
		12.07.14	15.00	15.07.14	23.59	
		17.07.14	22.18	21.07.14	08.43	
		06.08.14	12.49	06.08.14	14.25	HRSG trip due to BFP Trip
		09.08.14	00.19	09.08.14	05.05	G.T. Trip
		09.08.14	18.59	10.08.14	00.08	
10.08.14	10.30	11.08.14	09.03			

Unit	Capacity in MW	Outage		Synchronization		Reason of Outage
		Date	Time	Date	Time	
STG-2	254	27.03.14	00.00	31.08.14	23:59	Commissioned on 27.03.14 and Stopped due to low demand and high frequency

(F) RITHALA POWER STATION

Unit	Capacity in MW	Outage		Synchronization		Reason of Outage
		Date	Time	Date	Time	
1	31.8	19.03.13	17:32	31.08.14	23:59	Stopped due to low demand and high frequency

Unit	Capacity in MW	Outage		Synchronization		Reason of Outage
		Date	Time	Date	Time	
2	31.8	07.06.13	22:41	31.08.14	23:59	Stopped due to low demand and high frequency

Unit	Capacity in MW	Outage		Synchronization		Reason of Outage
		Date	Time	Date	Time	
STG	31.8	07.06.13	22:38	31.08.14	23:59	Stopped due to low demand and high frequency

ALLOCATION OF POWER TO DELHI

A)

Allocation of power to Delhi from Unallocated quota of Central Sector Generating Stations to Delhi w.e.f. 27.03.2014**Time block 00.00hrs. to 24.00hrs. @ 0% allocation from Unallocated Quota**

Name of the Stn	Installed capacity	Total Un-allocated	Basic Allocation	Basic Allocation at periphery	Allocation out of Unallocated Quota	Allocation out of Un-allocation Quota at Delhi periphery	Total allocation at Delhi periphery
1	2	3	4	5	6	7	(8)=(5)+(7)
<u>NTPC STATIONS</u>							
Singrauli STPS	2000	300	150	130	0	0	130
Rihand-I	1000	150	100	87	0	0	87
Rihand Stage -II	1000	150	126	109	0	0	109
Rihand Stage -III	1000	150	132	115	0	0	115
ANTA GPS	419	63	44	41	0	0	41
Auriya GPS	663.36	99	72	67	0	0	67
Dadri GPS	829.78	129	91	85	0	0	85
Dadri NCTPS (Th)	840	0	756	657	0	0	657
Dadri NCTPS (Th) Stage-II	980	147	735	639	0	0	639
Unchahaar-I TPS	420	20	24	21	0	0	21
Unchahaar-II TPS	420	63	47	41	0	0	41
Unchahaar-III TPS	210	31	29	25	0	0	25
TOTAL	9782	1302	2306	2016	0	0	2016
<u>NHPC</u>							
Baira Suil HPS	180	0	20	19	0	0	19
Salal HPS	690	0	80	76	0	0	76
Tanakpur HEP	94	0	12	11	0	0	11
Chamera HEP	540	0	43	41	0	0	41
Chamera-II HEP	300	54	40	38	0	0	38
Chamera-III HEP	231	35	29	28	0	0	28
URI-I HEP	480	0	53	50	0	0	50
URI-II HEP	180	0	24	23	0	0	23
Sewa HEP	120	18	16	15	0	0	15
Dhauri Ganga HEP	280	42	37	35	0	0	35
Dulhasti HEP	390	58	50	48	0	0	48
Parbati-III HEP	390	50	50	47	0	0	47
TOTAL	3875	256	454	431	0	0	431
<u>NPC</u>							
Narora APS	440	64	47	41	0	0	41
RAPP (C)	440	64	56	49	0	0	49
TOTAL	880	128	103	89	0	0	89
<u>SVJNL</u>							
Nathpa Jhakri HEP	1500	149	142	135	0	0	135
<u>THDC</u>							
Tehri Hydro	1000	99	103	98	0	0	98
Koteshwar HEP	400	40	39	37	0	0	37
TOTAL	1400	139	142	135	0	0	135
Total	17437	1974	3147	2807	0	0	2807
<u>Allocation from ER and Tala HEP</u>							
Farakka	1600	0	22	19	0	0	19
Kahalgaon	840	0	51	43	0	0	43
Talchar	1000	0	0	0	0	0	0
Tala HEP	1020	153	30	25	0	0	25
Kahalgaon-II	1500	0	157	131	0	0	131
Total ER	5960	153	261	217	0	0	217
<u>Joint Venture</u>							
Jhajjar TPS	1500	114	377	338	0	0	338
Ultra Mega Projects							
Sasan	1320	0	149	128	0	0	128
Grand Total	26217	2241	3933	3491	0	0	3491

B) Allocation of power to Delhi from Unallocated quota of Central Sector Generating Stations to Delhi w.e.f. 18.06.2014

Time block 00.00hrs. to 24.00hrs. @ 0% allocation from Unallocated Quota

Name of the Stn	Installed capacity	Total Un-allocated	Basic Allocation	Basic Allocation at periphery	Allocation out of Unallocated Quota	Allocation out of Un-allocation Quota at Delhi periphery	Total allocation at Delhi periphery
1	2	3	4	5	6	7	(8)=(5)+(7)
<u>NTPC STATIONS</u>							
Singrauli STPS	2000	300	150	130	0	0	130
Rihand-I	1000	150	100	87	0	0	87
Rihand Stage -II	1000	150	126	109	0	0	109
Rihand Stage -III	1000	150	132	115	0	0	115
ANTA GPS	419	63	44	41	0	0	41
Auriya GPS	663.36	99	72	67	0	0	67
Dadri GPS	829.78	129	91	85	0	0	85
Dadri NCTPS (Th)	840	0	756	657	0	0	657
Dadri NCTPS (Th) Stage-II	980	147	735	639	0	0	639
Unchahaar-I TPS	420	20	24	21	0	0	21
Unchahaar-II TPS	420	63	47	41	0	0	41
Unchahaar-III TPS	210	31	29	25	0	0	25
TOTAL	9782	1302	2306	2016	0	0	2016
<u>NHPC</u>							
Baira Suil HPS	180	0	20	19	0	0	19
Salal HPS	690	0	80	76	0	0	76
Tanakpur HEP	94	0	12	11	0	0	11
Chamera HEP	540	0	43	41	0	0	41
Chamera-II HEP	300	54	40	38	0	0	38
Chamera-III HEP	231	35	29	28	0	0	28
URI-I HEP	480	0	53	50	0	0	50
URI-II HEP	180	0	24	23	0	0	23
Sewa HEP	120	18	16	15	0	0	15
Dhaulti Ganga HEP	280	42	37	35	0	0	35
Dulhasti HEP	390	58	50	48	0	0	48
Parbati-III HEP	520	66	66	63	0	0	63
TOTAL	4005	272	471	447	0	0	447
<u>NPC</u>							
Narora APS	440	64	47	41	0	0	41
RAPP (C)	440	64	56	49	0	0	49
TOTAL	880	128	103	89	0	0	89
<u>SVJNL</u>							
Nathpa Jhakri HEP	1500	149	142	135	0	0	135
<u>THDC</u>							
Tehri Hydro	1000	99	103	98	0	0	98
Koteshwar HEP	400	40	39	37	0	0	37
TOTAL	1400	139	142	135	0	0	135
Total	17567	1990	3164	2823	0	0	2823
<u>Allocation from ER and Tala HEP</u>							
Farakka	1600	0	22	19	0	0	19
Kahalgaon	840	0	51	43	0	0	43
Talchar	1000	0	0	0	0	0	0
Tala HEP	1020	153	30	25	0	0	25
Kahalgaon-II	1500	0	157	131	0	0	131
Total ER	5960	153	261	217	0	0	217
<u>Joint Venture</u>							
Jhajjar TPS	1500	114	52	47	0	0	47
<u>Ultra Mega Projects</u>							
Sasan	1320	0	149	128	0	0	128
Grand Total	26347	2257	3625	3215	0	0	3215

C) Allocation of power to Delhi from Unallocated quota of Central Sector Generating Stations to Delhi w.e.f. 21.06.2014

Time block 00.00hrs. to 24.00hrs. @ 0% allocation from Unallocated Quota

Name of the Stn	Installed capacity	Total Un-allocated	Basic Allocation	Basic Allocation at periphery	Allocation out of Unallocated Quota	Allocation out of Un-allocation Quota at Delhi periphery	Total allocation at Delhi periphery
1	2	3	4	5	6	7	(8)=(5)+(7)
<u>NTPC STATIONS</u>							
Singrauli STPS	2000	300	150	130	0	0	130
Rihand-I	1000	150	100	87	0	0	87
Rihand Stage -II	1000	150	126	109	0	0	109
Rihand Stage -III	1000	150	132	115	0	0	115
ANTA GPS	419	63	44	41	0	0	41
Auriya GPS	663.36	99	72	67	0	0	67
Dadri GPS	829.78	129	91	85	0	0	85
Dadri NCTPS (Th)	840	0	756	657	0	0	657
Dadri NCTPS (Th) Stage-II	980	147	735	639	0	0	639
Unchahaar-I TPS	420	20	24	21	0	0	21
Unchahaar-II TPS	420	63	47	41	0	0	41
Unchahaar-III TPS	210	31	29	25	0	0	25
TOTAL	9782	1302	2306	2016	0	0	2016
<u>NHPC</u>							
Baira Suil HPS	180	0	20	19	0	0	19
Salal HPS	690	0	80	76	0	0	76
Tanakpur HEP	94	0	12	11	0	0	11
Chamera HEP	540	0	43	41	0	0	41
Chamera-II HEP	300	54	40	38	0	0	38
Chamera-III HEP	231	35	29	28	0	0	28
URI-I HEP	480	0	53	50	0	0	50
URI-II HEP	180	0	24	23	0	0	23
Sewa HEP	120	18	16	15	0	0	15
Dhauri Ganga HEP	280	42	37	35	0	0	35
Dulhasti HEP	390	58	50	48	0	0	48
Parbati-III HEP	520	66	66	63	0	0	63
TOTAL	4005	272	471	447	0	0	447
<u>NPC</u>							
Narora APS	440	64	47	41	0	0	41
RAPP (C)	440	64	56	49	0	0	49
TOTAL	880	128	103	89	0	0	89
<u>SVJNL</u>							
Nathpa Jhakri HEP	1500	149	142	135	0	0	135
<u>THDC</u>							
Tehri Hydro	1000	99	103	98	0	0	98
Koteshwar HEP	400	40	39	37	0	0	37
TOTAL	1400	139	142	135	0	0	135
Total	17567	1990	3164	2823	0	0	2823
<u>Allocation from ER and Tala HEP</u>							
Farakka	1600	0	22	19	0	0	19
Kahalgaon	840	0	51	43	0	0	43
Talchar	1000	0	0	0	0	0	0
Tala HEP	1020	153	30	25	0	0	25
Kahalgaon-II	1500	0	157	131	0	0	131
Total ER	5960	153	261	217	0	0	217
<u>Joint Venture</u>							
Jhajjar TPS	1500	114	0	0	0	0	0
Ultra Mega Projects							
Sasan	2640	0	297	255	0	0	255
Grand Total	27667	2257	3721	3296	0	0	3296

D) Allocation of power to Delhi from Unallocated quota of Central Sector Generating Stations to Delhi w.e.f. 10.09.2014

Time block 00.00hrs. to 24.00hrs. @ 0% allocation from Unallocated Quota

Name of the Stn	Installed capacity	Total Un-allocated	Basic Allocation	Basic Allocation at periphery	Allocation out of Unallocated Quota	Allocation out of Un-allocation Quota at Delhi periphery	Total allocation at Delhi periphery
1	2	3	4	5	6	7	(8)=(5)+(7)
<u>NTPC STATIONS</u>							
Singrauli STPS	2000	300	150	130	0	0	130
Rihand-I	1000	150	100	87	0	0	87
Rihand Stage -II	1000	150	126	109	0	0	109
Rihand Stage -III	1000	150	132	115	0	0	115
ANTA GPS	419	63	44	41	0	0	41
Auriya GPS	663.36	99	72	67	0	0	67
Dadri GPS	829.78	129	91	85	0	0	85
Dadri NCTPS (Th)	840	0	576	500	0	0	500
Dadri NCTPS (Th) Stage-II	980	147	735	639	0	0	639
Unchahaar-I TPS	420	20	24	21	0	0	21
Unchahaar-II TPS	420	63	47	41	0	0	41
Unchahaar-III TPS	210	31	29	25	0	0	25
TOTAL	9782	1302	2126	1860	0	0	1860
<u>NHPC</u>							
Baira Suil HPS	180	0	20	19	0	0	19
Salal HPS	690	0	80	76	0	0	76
Tanakpur HEP	94	0	12	11	0	0	11
Chamera HEP	540	0	43	41	0	0	41
Chamera-II HEP	300	54	40	38	0	0	38
Chamera-III HEP	231	35	29	28	0	0	28
URI-I HEP	480	0	53	50	0	0	50
URI-II HEP	180	0	24	23	0	0	23
Sewa HEP	120	18	16	15	0	0	15
Dhauri Ganga HEP	280	42	37	35	0	0	35
Dulhasti HEP	390	58	50	48	0	0	48
Parbati-III HEP	520	66	66	63	0	0	63
TOTAL	4005	272	471	447	0	0	447
<u>NPC</u>							
Narora APS	440	64	47	41	0	0	41
RAPP (C)	440	64	56	49	0	0	49
TOTAL	880	128	103	89	0	0	89
<u>SVJNL</u>							
Nathpa Jhakri HEP	1500	149	142	135	0	0	135
<u>THDC</u>							
Tehri Hydro	1000	99	103	98	0	0	98
Koteshwar HEP	400	40	39	37	0	0	37
TOTAL	1400	139	142	135	0	0	135
Total	17567	1990	2984	2667	0	0	2667
<u>Allocation from ER and Tala HEP</u>							
Farakka	1600	0	22	19	0	0	19
Kahalgaon	840	0	51	43	0	0	43
Talchar	1000	0	0	0	0	0	0
Tala HEP	1020	153	30	25	0	0	25
Kahalgaon-II	1500	0	157	131	0	0	131
Total ER	5960	153	261	217	0	0	217
<u>Joint Venture</u>							
Jhajjar TPS	1500	114	0	0	0	0	0
Ultra Mega Projects							
Sasan	2640	0	297	255	0	0	255
Grand Total	27667	2257	3541	3140	0	0	3140

5 ALLOCATION OF POWER TO DISCOMS

A) ALLOCATION OF POWER TO VARIOUS LICENCEES AS PER ORDER OF DERC AND DECISION OF GNCTD FOR ALLOCATION OF CENTRAL SECTOR STATIONS (DADRI THERMAL & BTPS) AND STATE SECTOR GENERATING STATIONS w.e.f. 06.08.2013.

(Allocation In %)

(A) 10.00hrs. to 17.00hrs.

SOURCES	LICENSEES					
	NDMC	MES	NDPL	BRPL	BYPL	TOTAL
1. Central Sector without Dadri (Th)	0	0	29.18	43.58	27.24	100.00
2. Dadri (Th)	16.63	0	24.22	36.86	22.39	100.00
3. BTPS	17.73	7.09	21.81	33.2	20.17	100.00
4. RPH	0	0	29.025	44.133	26.842	100.00
5. GT	0	0	29.02	44.16	26.82	100.00
6. Pragati	30.3	0	20.22	30.78	18.7	100.00
7. DVC	0	0	29.18	43.58	27.24	100.00
8. BAWANA CCGT*	7.30	1.82	20.688	30.888	19.304	80.00

(B) 00.00hrs. to 10.00hrs. and 17.00hrs. to 24.00hrs.

SOURCES	LICENSEES					
	NDMC	MES	NDPL	BRPL	BYPL	TOTAL
1. Central Sector without Dadri (Th)	0	0	29.18	43.58	27.24	100.00
2. Dadri (Th)	16.53	0	24.22	36.86	22.39	100.00
3. BTPS	17.73	7.09	21.81	33.2	20.17	100.00
4. RPH	0	0	29.025	44.133	26.842	100.00
5. GT	0	0	29.02	44.16	26.82	100.00
6. Pragati	30.3	0	20.22	30.78	18.7	100.00
7. DVC	0	0	29.18	43.58	27.24	100.00
8. BAWANA CCGT*	7.30	1.82	20.688	30.888	19.304	80.00

* 20% POWER OF BAWANA CCGT ALLOCATED TO HARYANA (10%) & PUNJAB (10%)

6 POWER AVAILABILITY-DEMAND POSITION AT THE TIME OF PEAK DEMAND MET DURING AUGUST 2014

All figures in MW

Date	Time of peak demand	Generation within Delhi								Import from the Grid	Schedule from the Grid	OD(-)/UD(+)	Demand met	Shedding	Un-Restricted Demand
		RPH	GT	PPCL	Rithala	Bawana	Towmcl	BTPS	Total						
(1)	(2)	(3)	(4)	(5)	(6)	(7)	(8)	(9)= (3) to (8)	(10)	(11)	(12)= (11) - (10)	(13)= (11)+ (12)	(14)	(15)= (13)+ (14)	
1	15:45:00	94	114	277	0	298	10	406	1199	4149	4084	65	5348	18	5366
2	0:00:39	97	105	275	0	295	9	424	1205	3835	3669	166	5040	0	5040
3	23:21:08	95	109	281	0	298	11	368	1162	3680	3625	55	4842	0	4842
4	15:20:04	96	124	280	0	288	12	227	1027	4151	3847	304	5178	7	5185
5	22:48:12	94	74	258	0	296	0	360	1082	3903	4047	-144	4985	0	4985
6	15:28:25	91	106	267	0	295	0	370	1129	4045	3855	190	5174	0	5174
7	22:52:18	41	73	293	0	302	0	384	1093	3892	3839	53	4985	2	4987
8	16:05:15	44	70	281	0	235	12	371	1013	3981	3810	171	4994	7	5001
9	23:17:36	47	73	285	0	31	0	375	811	3989	3973	16	4800	0	4800
10	0:01:38	46	73	290	0	31	0	370	810	3910	3603	307	4720	0	4720
11	23:30:32	45	71	287	0	293	0	363	1059	3914	3614	300	4973	25	4998
12	15:16:09	33	68	279	0	283	8	380	1051	4177	3918	259	5228	37	5265
13	15:46:26	41	68	282	0	285	13	393	1082	4232	3997	235	5314	3	5317
14	15:04:09	44	68	283	0	293	12	368	1068	4089	4052	37	5157	0	5157
15	0:30:00	47	71	264	0	296	13	418	1109	3521	3344	177	4630	0	4630
16	22:54:20	83	74	138	0	296	13	395	999	3630	3530	100	4629	0	4629
17	23:23:53	44	75	261	0	290	13	416	1099	3482	3328	154	4581	18	4599
18	23:17:33	44	74	260	0	290	12	425	1105	3844	3691	153	4949	7	4956
19	23:16:05	49	107	288	0	437	14	382	1277	3956	3764	192	5233	54	5287
20	22.43.00	78	105	288	0	432	15	406	1324	4071	3850	221	5395	29	5424
21	22.38.59	82	106	288	0	440	12	408	1336	3931	3777	154	5267	37	5304
22	15.32.51	69	100	270	0	546	16	338	1339	4116	3830	286	5455	0	5455
23	23.38.16	45	107	288	0	441	16	297	1194	4102	4012	90	5296	3	5299
24	00.01.27	46	107	283	0	441	16	302	1195	4046	3907	139	5241	0	5241
25	22.57.15	48	105	284	0	569	9	285	1300	4163	3997	166	5463	18	5481
26	22.48.01	47	106	280	0	590	12	291	1326	4172	4074	98	5498	19	5517
27	22.49.14	47	106	287	0	640	16	292	1388	4119	4009	110	5507	82	5589
28	00.00.03	47	106	290	0	525	9	295	1272	4090	3907	183	5362	28	5390
29	22.57.46	53	106	293	0	488	16	133	1089	3897	3961	-64	4986	59	5045
30	00.01.29	53	106	290	0	487	15	134	1085	3811	3772	39	4896	3	4899
31	00.05.16	81	106	269	0	452	16	142	1066	3409	3425	-16	4475	0	4475

POWER AVAILABILITY- DEMAND POSITION AT THE TIME OF MAXIMUM UNRESTRICTED DEMAND DURING AUGUST 2014

Date	Time of peak demand	Generation within Delhi								Import from the Grid	Schedule from the Grid	OD(-) / UD(+)	Demand met	Shedding	Un-Restricted Demand
		RPH	GT	PPCL	Rithala	Bawana	Towmcl	BTPS	Total						
(1)	(2)	(3)	(4)	(5)	(6)	(7)	(8)		(9)=(3) to (8)	(10)	(11)	(12)=(11)-(10)	(13)=(11)+(12)	(14)	(15)=(13)+(14)
1	15:45:00	94	114	277	0	298	10	406	1199	4149	4084	65	5348	18	5366
2	0:00:39	97	105	275	0	295	9	424	1205	3835	3669	166	5040	0	5040
3	23:21:08	95	109	281	0	298	11	368	1162	3680	3625	55	4842	0	4842
4	15:20:04	96	124	280	0	288	12	227	1027	4151	3847	304	5178	7	5185
5	22:48:12	94	74	258	0	296	0	360	1082	3903	4047	-144	4985	0	4985
6	15:28:25	91	106	267	0	295	0	370	1129	4045	3855	190	5174	0	5174
7	22:52:18	41	73	293	0	302	0	384	1093	3892	3839	53	4985	2	4987
8	16:05:15	44	70	281	0	235	12	371	1013	3981	3810	171	4994	7	5001
9	23:17:36	47	73	285	0	31	0	375	811	3989	3973	16	4800	0	4800
10	0:01:38	46	73	290	0	31	0	370	810	3910	3603	307	4720	0	4720
11	23:30:32	45	71	287	0	293	0	363	1059	3914	3614	300	4973	25	4998
12	15:16:09	33	68	279	0	283	8	380	1051	4177	3918	259	5228	37	5265
13	15:46:26	41	68	282	0	285	13	393	1082	4232	3997	235	5314	3	5317
14	15:04:09	44	68	283	0	293	12	368	1068	4089	4052	37	5157	0	5157
15	0:30:00	47	71	264	0	296	13	418	1109	3521	3344	177	4630	0	4630
16	22:54:20	83	74	138	0	296	13	395	999	3630	3530	100	4629	0	4629
17	23:23:53	44	75	261	0	290	13	416	1099	3482	3328	154	4581	18	4599
18	23:17:33	44	74	260	0	290	12	425	1105	3844	3691	153	4949	7	4956
19	23:16:05	49	107	288	0	437	14	382	1277	3956	3764	192	5233	54	5287
20	22.43.00	78	105	288	0	432	15	406	1324	4071	3850	221	5395	29	5424
21	22.38.59	82	106	288	0	440	12	408	1336	3931	3777	154	5267	37	5304
22	15.32.51	69	100	270	0	546	16	338	1339	4116	3830	286	5455	0	5455
23	23.38.16	45	107	288	0	441	16	297	1194	4102	4012	90	5296	3	5299
24	00.01.27	46	107	283	0	441	16	302	1195	4046	3907	139	5241	0	5241
25	22.57.15	48	105	284	0	569	9	285	1300	4163	3997	166	5463	18	5481
26	22.48.01	47	106	280	0	590	12	291	1326	4172	4074	98	5498	19	5517
27	22.49.14	47	106	287	0	640	16	292	1388	4119	4009	110	5507	82	5589
28	00.00.03	47	106	290	0	525	9	295	1272	4090	3907	183	5362	28	5390
29	22.57.46	53	106	293	0	488	16	133	1089	3897	3961	-64	4986	59	5045
30	00.01.29	53	106	290	0	487	15	134	1085	3811	3772	39	4896	3	4899
31	00.05.16	81	106	269	0	452	16	142	1066	3409	3425	-16	4475	0	4475

SOURCEWISE SCHEDULED DRAWL FROM NORTHERN GRID AS WELL AS AVAILABILITY WITHIN DELHI FOR AUGUST 2014

A) AVAILABILITY FROM GENCO AND PRAGATI STNs. (all fig in MUs)

A (i) RPH	49.613
(ii) GT+STG	72.415
(iii) PRAGATI	209.264
(iv) RITHALA	0.000
(v) BAWANA CCGT	259.992
(vi) Timarpur ó Okhla	10.384
TOTAL	601.668
B) AVAILABILITY FROM BTPS	260.172
C) AUXILIARY CONSUMPTION OF GENERATING STNs. EXCLUDING BTPS	26.947
D) NET GENERATION AVAILABLE WITHIN DELHI(A+B-C)	834.893

B) SOURCE WISE SCHEDULED DRAWL FROM THE NORTHERN GRID

NAME OF THE STATION	AVAILABILITY AT POWER PLANT	AVAILABILITY AT DELHI PERIPHERY	ALLOCATION MADE BY NRLDC AT POWER PLANT	ALLOCATION MADE BY NRLDC AT DELHI PERIPHERY
B/SUIL	8.005	7.752	8.005	7.752
SALAL	55.740	53.986	55.740	53.986
SASAN	162.202	157.109	161.650	156.574
TANKAPUR	7.691	7.450	7.691	7.450
CHAMERA	24.574	23.797	24.574	23.797
CHAMERA -II	27.675	26.801	27.675	26.801
CHAMERA -III	19.380	18.768	19.380	18.768
DHAULIGANGA	17.237	16.698	17.237	16.698
SEWA -2	4.469	4.327	4.469	4.327
URI	31.142	30.166	31.142	30.166
URI-II	21.619	20.940	21.619	20.940
KOTESHWAR	21.776	21.082	21.776	21.082
PARBATI3	16.616	16.090	16.616	16.090
RAMPUR	0.000	0.000	0.000	0.000
MUNDRA_UMPP	0.000	0.000	0.000	0.000
ANTA (GAS)	15.076	14.604	12.041	11.664
ANTA (RLNG)	15.897	15.398	0.757	0.736
ANTA (LIQUID)	0.000	0.000	0.000	0.000
DADRI (GAS)	16.417	15.899	12.092	11.713
DADRI (RLNG)	43.158	41.806	2.375	2.303
DADRI (LIQUID)	0.000	0.000	0.000	0.000
AURAIYA (GAS)	10.780	10.441	8.014	7.763
AURAIYA (RLNG)	39.380	38.144	1.688	1.636
AURAIYA (LIQUID)	0.000	0.000	0.000	0.000
SINGRAULI	79.553	77.060	78.734	76.266
RIHAND -I	39.286	38.051	37.072	35.906
RIHAND -II	81.795	79.230	77.376	74.949
RIHAND -III	44.870	43.475	42.354	41.035
UNCHAHAAR-I	14.184	13.734	11.026	10.676
UNCHAHAAR-II	31.289	30.306	25.114	24.326
UNCHAHAAR-III	20.348	19.710	16.426	15.910
DADRI (TH)	536.664	519.839	420.717	407.539
DADRI (TH) STAGE-II	346.400	335.514	300.346	290.901
NAPP	21.410	20.738	20.747	20.096
RAPP 'B'	0.000	0.000	0.000	0.000
RAPP 'C'	34.564	33.480	34.564	33.480
NATHPA JHAKRI	107.822	104.440	80.432	77.909
DULASTI	35.662	34.544	35.662	34.544
TEHRI	62.268	60.286	62.268	60.286
JHAJJAR	0.000	0.000	0.000	0.000
KHELGAON	31.776	30.780	27.558	26.695
KHELGAON-II	69.192	67.008	63.983	61.962
FARAKA	10.846	10.504	10.558	10.225
TALA	23.341	22.608	23.341	22.608
TALCHER	0.000	0.000	0.000	0.000
DVC	179.076	177.228	177.228	171.629

NAME OF THE STATION	AVAILABILITY AT POWER PLANT	AVAILABILITY AT DELHI PERIPHERY	ALLOCATION MADE BY NRLDC AT POWER PLANT	ALLOCATION MADE BY NRLDC AT DELHI PERIPHERY
DVC CTPS (BRPL)	0.000	0.000	0.000	0.000
DVC CTPS (BYPL)	0.000	0.000	0.000	0.000
DVC CTPS (NDPL)	0.000	0.000	0.000	0.000
METHON POWER(NDPL)LT-06	160.984	159.317	159.317	154.290
DVC MEJIA (LT-08)(BYPL)	0.000	0.000	0.000	0.000
URS	0.000	0.000	0.000	0.000
JAMMU & KASHMIR	218.879	215.886	215.886	209.062
HIMACHAL PRADESH	85.377	84.209	84.209	81.547
MEGHALAYA	1.097	1.081	1.081	1.046
MADHYA PRADESH	36.186	35.455	35.455	34.343
WEST BENGAL	0.000	0.000	0.000	0.000
DVC (FOR NDPL) LT-09	0.000	0.000	0.000	0.000
HARYANA (LT-05)	37.541	37.020	37.020	35.847
JHARKHAND	15.221	15.109	15.109	14.632
ORISSA	0.483	0.477	0.477	0.462
TO MEGHALAYA	0.000	0.000	0.000	0.000
TO ORISSA	0.000	0.000	0.000	0.000
TO UTTAR PRADESH	-6.405	-6.524	-6.524	-6.740
TO RAJASTHAN	-0.242	-0.246	-0.246	-0.254
POWER EXCHANGE(IEX)	105.347	102.007	105.347	102.007
TO POWER EXCHANGE (IEX)	-83.245	-85.951	-83.245	-85.951
POWRER EXCHANGE(PX)	0.000	0.000	0.000	0.000
TO POWER EXCHANGE (PX)	-20.572	-21.248	-20.572	-21.248
TO SHARE PROJECT (HARYANA)	-26.252	-27.111	-26.252	-27.111
TO SHARE PROJECT (PUNJAB)	-26.250	-27.109	-26.250	-27.109
TOTAL	2827.329	2742.167	2490.858	2402.010

C) AGENCY WISE BREAKUP OF ENERGY SCHEDULED DRAW FROM THE GRID

NAME OF THE STATION	AVAILABILITY AT POWER PLANT	AVAILABILITY AT DELHI PERIPHERY	ALLOCATION MADE BY NRLDC AT POWER PLANT	ALLOCATION MADE BY NRLDC AT DELHI PERIPHERY
NTPC - NR	1335.099	1293.211	1046.132	1013.323
NTPC - ER	111.813	108.292	102.099	98.881
NHPC	269.810	261.320	269.810	261.320
NPC	55.974	54.218	55.311	53.576
SASAN	162.202	157.109	161.650	156.574
KOTESHWAR	21.776	21.082	21.776	21.082
MUNDRA_UMPP	0.000	0.000	0.000	0.000
NATHPA JHAKRI	107.822	104.440	80.432	77.909
TEHRI	62.268	60.286	62.268	60.286
TALA	23.341	22.608	23.341	22.608
JHAJJAR	0.000	0.000	0.000	0.000
TALCHER	0.000	0.000	0.000	0.000
DVC	179.076	177.228	177.228	171.629
HARYANA	0.000	0.000	0.000	0.000
ASSAM	0.000	0.000	0.000	0.000
TRIPURA	0.000	0.000	0.000	0.000
DVC CTPS (BRPL)	0.000	0.000	0.000	0.000
DVC CTPS (BYPL)	0.000	0.000	0.000	0.000
DVC CTPS (NDPL)	0.000	0.000	0.000	0.000
METHON POWER (NDPL)-LT-06	160.984	159.317	159.317	154.290
DVC MEJIA (LT-08)(BYPL)	0.000	0.000	0.000	0.000
URS	0.000	0.000	0.000	0.000
JAMMU & KASHMIR	218.879	215.886	215.886	209.062
HIMACHAL PRADESH	85.377	84.209	84.209	81.547
MEGHALAYA	1.097	1.081	1.081	1.046
MADHYA PRADESH(WR)	36.186	35.455	35.455	34.343
WEST BENGAL	0.000	0.000	0.000	0.000
DVC (FOR NDPL) LT-09	0.000	0.000	0.000	0.000
HARYANA (LT -05)	37.541	37.020	37.020	35.847
JHARKHAND	15.221	15.109	15.109	14.632
ORISSA	0.483	0.477	0.477	0.462
POWER EXCHANGE(IEX)	105.347	102.007	105.347	102.007
POWER EXCHANGE(PX)	0.000	0.000	0.000	0.000
TOTAL	2990.295	2910.356	2653.947	2570.423

D) AGENCY WISE BREAKUP OF ENERGY SCHEDULED BY NRLDC FOR EXPORT TO OTHER UTILITIES FROM DTL

NAME OF THE STATION	AVAILABILITY AT POWER PLANT	AVAILABILITY AT PERIPHERY	ALLOCATION MADE BY NRLDC AT POWER PLANT	ALLOCATION MADE BY NRLDC AT POWER PERIPHERY
TO MEGHALAYA	0.000	0.000	0.000	0.000
TO ORISSA	0.000	0.000	0.000	0.000
TO UTTAR PRADESH	-6.405	-6.524	-6.524	-6.740
TO JAMMU & KASHMIR	0.000	0.000	0.000	0.000
TO ANDHRA	0.000	0.000	0.000	0.000
TO KERALA	0.000	0.000	0.000	0.000
TO MADHYA PRADESH	0.000	0.000	0.000	0.000
TO NEPAL	0.000	0.000	0.000	0.000
TO RAJASTHAN	-0.242	-0.246	-0.246	-0.254
TO MAHARASHTRA	0.000	0.000	0.000	0.000
TO UTTRANCHAL	0.000	0.000	0.000	0.000
TO HIMACHAL PRADESH	0.000	0.000	0.000	0.000
TO WEST BENGAL	0.000	0.000	0.000	0.000
TO POWER EXCHANGE (IEX)	-83.245	-85.951	-83.245	-85.951
TO POWER EXCHANGE (PX)	-20.572	-21.248	-20.572	-21.248
TO SHARE PROJECT (HARYANA)	-26.252	-27.111	-26.252	-27.111
TO SHARE PROJECT (PUNJAB)	-26.250	-27.109	-26.250	-27.109
TOTAL	-162.966	-168.189	-163.089	-68.414
TOTAL SCHEDULED DRAWAL FROM THE GRID	2827.329	2742.167	2490.858	2402.010
TOTAL CONSUMPTION INCLUDING AUX. OF GENERATING STNs. EXCLUDING BTPS				3238.768
NET CONSUMPTION				3211.821
AVAILABILITY WITHIN DELHI				834.893
ACTUAL DRAWAL FROM THE GRID				2376.928
OVER DRAWAL(+)/UNDER DRAWAL(-) FROM THE GRID ON THE BASIS OF SCHEDULED ALLOCATION MADE BY NRLDC TO DELHI AT PERIPHERY				-28.082
LOAD SHEDDING				11.752
UNRESTRICTED DEMAND (GROSS)				3250.520
UNRESTRICTED DEMAND (NET)				3223.573
MAX. NET CONSUMPTION				1165.033 ON 22.08.2014
MAX. LOAD SHEDDING				483MW ON 19.08.2014 AT 14.00HRS.
PEAK LOAD	Peak Demand during the month			SCHEDDING AT PEAK TIME
DAY PEAK	5455MW AT 15.32.51HRS ON 22.08.2014			0 MW
EVENING PEAK	5507MW AT 22.49.14HRS ON 27.08.2014			82MW
P.L.F. OF GENCO AND PRAGATI STNs.	RPH			49.47%
	GT			36.56%
	PRAGATI			85.23%
	RITHALA			0.00%
	BAWANA			25.49%
	Timarpur Okhla			87.23%

DATE	No. of Under Freq. Relay Operated	Shedding due to under frequency relay operation in MUs					Shedding due to Grid Restrictions (Over drawl / low freq.)				
		BSES		NDPL	NDMC	TOTAL	BSES		NDPL	NDMC	MES
		BYPL	BRPL				BYPL	BRPL			
1	2	3	4	5	6	7=3 to 6	8	9	10	11	11A
01-Aug-14	0	0.000	0.000	0.000	0.000	0.000	0.000	0.080	0.057	0.000	0.000
02-Aug-14	0	0.000	0.000	0.000	0.000	0.000	0.000	0.046	0.013	0.000	0.000
03-Aug-14	0	0.000	0.000	0.000	0.000	0.000	0.000	0.000	0.000	0.000	0.000
04-Aug-14	0	0.000	0.000	0.000	0.000	0.000	0.032	0.021	0.003	0.000	0.000
05-Aug-14	0	0.000	0.000	0.000	0.000	0.000	0.000	0.000	0.009	0.000	0.000
06-Aug-14	0	0.000	0.000	0.000	0.000	0.000	0.000	0.000	0.021	0.000	0.000
07-Aug-14	0	0.000	0.000	0.000	0.000	0.000	0.014	0.000	0.000	0.000	0.000
08-Aug-14	0	0.000	0.000	0.000	0.000	0.000	0.000	0.000	0.000	0.000	0.000
09-Aug-14	0	0.000	0.000	0.000	0.000	0.000	0.017	0.000	0.000	0.000	0.000
10-Aug-14	0	0.000	0.000	0.000	0.000	0.000	0.005	0.070	0.007	0.000	0.000
11-Aug-14	0	0.000	0.000	0.000	0.000	0.000	0.025	0.162	0.000	0.000	0.000
12-Aug-14	0	0.000	0.000	0.000	0.000	0.000	0.227	0.158	0.022	0.000	0.000
13-Aug-14	0	0.000	0.000	0.000	0.000	0.000	0.009	0.000	0.000	0.000	0.000
14-Aug-14	0	0.000	0.000	0.000	0.000	0.000	0.000	0.000	0.031	0.000	0.000
15-Aug-14	0	0.000	0.000	0.000	0.000	0.000	0.035	0.000	0.003	0.000	0.000
16-Aug-14	0	0.000	0.000	0.000	0.000	0.000	0.008	0.030	0.000	0.000	0.000
17-Aug-14	0	0.000	0.000	0.000	0.000	0.000	0.009	0.036	0.007	0.000	0.000
18-Aug-14	0	0.000	0.000	0.000	0.000	0.000	0.018	0.133	0.123	0.000	0.000
19-Aug-14	0	0.000	0.000	0.000	0.000	0.000	0.100	1.343	0.057	0.029	0.000
20-Aug-14	0	0.000	0.000	0.000	0.000	0.000	0.132	0.448	0.079	0.000	0.000
21-Aug-14	0	0.000	0.000	0.000	0.000	0.000	0.024	0.000	0.234	0.000	0.000
22-Aug-14	0	0.000	0.000	0.000	0.000	0.000	0.000	0.097	0.180	0.023	0.003
23-Aug-14	0	0.000	0.000	0.000	0.000	0.000	0.089	0.035	0.046	0.000	0.000
24-Aug-14	0	0.000	0.000	0.000	0.000	0.000	0.000	0.018	0.040	0.000	0.000
25-Aug-14	0	0.000	0.000	0.000	0.000	0.000	0.119	0.022	0.000	0.000	0.000
26-Aug-14	0	0.000	0.000	0.000	0.000	0.000	0.130	0.210	0.000	0.000	0.000
27-Aug-14	0	0.000	0.000	0.000	0.000	0.000	0.345	0.211	0.005	0.000	0.000
28-Aug-14	0	0.000	0.000	0.000	0.000	0.000	0.345	0.175	0.032	0.000	0.000
29-Aug-14	0	0.000	0.000	0.000	0.000	0.000	0.000	0.000	0.000	0.000	0.000
30-Aug-14	0	0.000	0.000	0.000	0.000	0.000	0.023	0.000	0.000	0.000	0.000
31-Aug-14	0	0.000	0.000	0.000	0.000	0.000	0.095	0.020	0.049	0.023	0.000
TOTAL	0	0.000	0.000	0.000	0.000	0.000	1.801	3.315	1.018	0.075	0.003

Date	Shedding due to Transmission/Grid Constraints in Central Sector Stations / TTC / ATC VOILATION				TOTAL 16=8to15	TOTAL SHEDDING DUE TO GRID RESTRIC TIONS 17=16+7	Due to T&D Constraints				
	BSES		NDPL	NDMC			DTL				
	BYPL	BRPL					BSES		NDPL	NDMC	MES
			BYPL	BRPL			18	19			
01-Aug-14	0.000	0.000	0.000	0.000	0.137	0.137	0.036	0.004	0.036	0.000	0.000
02-Aug-14	0.000	0.000	0.000	0.000	0.059	0.059	0.000	0.032	0.000	0.000	0.000
03-Aug-14	0.000	0.000	0.000	0.000	0.000	0.000	0.000	0.123	0.028	0.000	0.000
04-Aug-14	0.000	0.000	0.000	0.000	0.056	0.056	0.000	0.000	0.015	0.000	0.000
05-Aug-14	0.000	0.000	0.000	0.000	0.009	0.009	0.000	0.000	0.008	0.000	0.000
06-Aug-14	0.000	0.000	0.000	0.000	0.021	0.021	0.031	0.000	0.000	0.000	0.000
07-Aug-14	0.000	0.000	0.000	0.000	0.014	0.014	0.126	0.017	0.018	0.000	0.000
08-Aug-14	0.000	0.000	0.000	0.000	0.000	0.000	0.061	0.000	0.000	0.000	0.000
09-Aug-14	0.000	0.000	0.000	0.000	0.017	0.017	0.000	0.000	0.0004	0.000	0.000
10-Aug-14	0.000	0.000	0.000	0.000	0.082	0.082	0.034	0.004	0.000	0.000	0.000
11-Aug-14	0.000	0.000	0.000	0.000	0.187	0.187	0.003	0.116	0.000	0.000	0.000
12-Aug-14	0.000	0.000	0.000	0.000	0.407	0.407	0.000	0.454	0.024	0.000	0.000
13-Aug-14	0.000	0.000	0.000	0.000	0.009	0.009	0.000	0.000	0.000	0.000	0.000
14-Aug-14	0.000	0.000	0.000	0.000	0.031	0.031	0.000	0.000	0.000	0.000	0.000
15-Aug-14	0.000	0.000	0.000	0.000	0.038	0.038	0.000	0.000	0.008	0.000	0.000
16-Aug-14	0.000	0.000	0.000	0.000	0.038	0.038	0.051	0.000	0.000	0.000	0.000
17-Aug-14	0.000	0.000	0.000	0.000	0.052	0.052	0.000	0.000	0.000	0.000	0.000
18-Aug-14	0.000	0.000	0.000	0.000	0.274	0.274	0.000	0.000	0.000	0.000	0.000
19-Aug-14	0.000	0.000	0.000	0.000	1.529	1.529	0.252	0.000	0.000	0.000	0.000
20-Aug-14	0.000	0.000	0.000	0.000	0.659	0.659	0.000	0.000	0.003	0.000	0.000
21-Aug-14	0.000	0.000	0.000	0.000	0.258	0.258	0.000	0.000	0.001	0.000	0.000
22-Aug-14	0.000	0.000	0.000	0.000	0.303	0.303	0.061	0.000	0.013	0.000	0.000
23-Aug-14	0.000	0.000	0.000	0.000	0.170	0.170	0.000	0.006	0.000	0.000	0.000
24-Aug-14	0.000	0.000	0.000	0.000	0.058	0.058	0.006	0.014	0.000	0.000	0.000
25-Aug-14	0.000	0.000	0.000	0.000	0.141	0.141	0.000	0.000	0.001	0.000	0.000
26-Aug-14	0.000	0.000	0.000	0.000	0.340	0.340	0.015	0.402	0.000	0.000	0.000
27-Aug-14	0.000	0.000	0.000	0.000	0.561	0.561	0.003	0.044	0.004	0.000	0.000
28-Aug-14	0.000	0.000	0.000	0.000	0.552	0.552	0.020	0.068	0.011	0.000	0.000
29-Aug-14	0.000	0.000	0.000	0.000	0.000	0.000	0.014	0.186	0.047	0.000	0.000
30-Aug-14	0.000	0.000	0.000	0.000	0.023	0.023	0.036	0.000	0.025	0.000	0.000
31-Aug-14	0.000	0.000	0.000	0.000	0.187	0.187	0.091	0.001	0.000	0.000	0.000
TOTAL	0.000	0.000	0.000	0.000	6.212	6.212	0.840	1.471	0.242	0.000	0.000

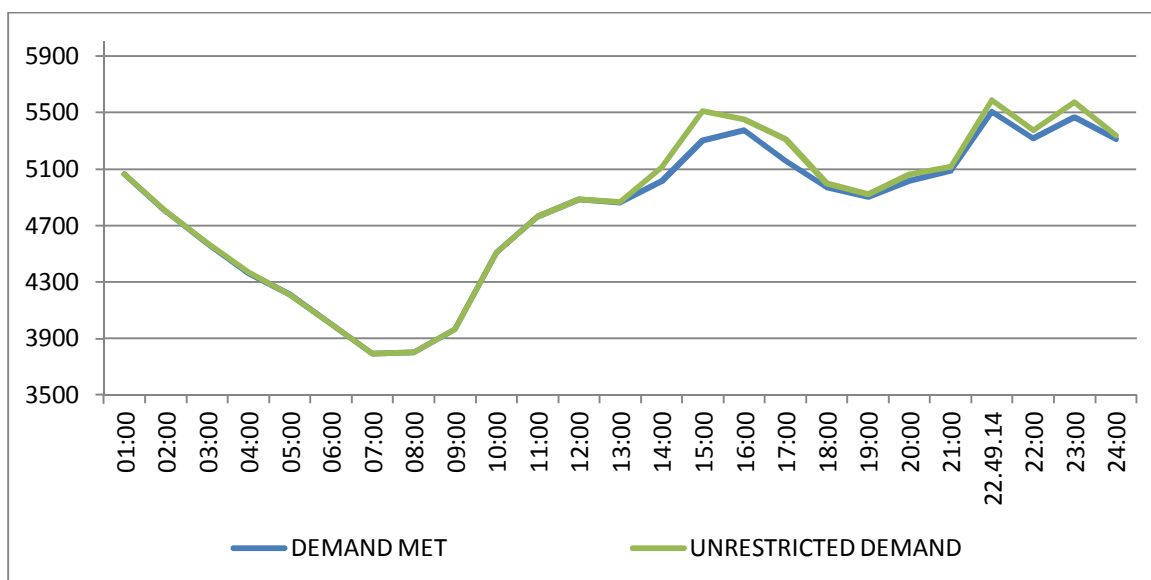
DATE	DUE TO T&D CONSTRAINTS				OTHER AGENCIES LIKE GENCO, BBMB, BTPS ETC.	THEFT PRONE SHEDDING			TOTAL SHEDDING DUE TO T&D CONSTS. & THEFT PRONE	GRAND TOTAL
	DISCOMS					BSES		NDPL		
	BSES		NDPL	NDMC		BSES				
	BYPL	BRPL				BYPL	BRPL			
1	23	24	25	26	27	28	29	30=18 to29	31=30+17	
01-Aug-14	0.014	0.031	0.0000	0.000	0.000	0.000	0.000	0.023	0.144	0.281
02-Aug-14	0.000	0.081	0.000	0.000	0.000	0.000	0.000	0.024	0.137	0.196
03-Aug-14	0.005	0.070	0.011	0.000	0.001	0.000	0.000	0.017	0.255	0.255
04-Aug-14	0.008	0.028	0.000	0.000	0.000	0.000	0.000	0.014	0.065	0.121
05-Aug-14	0.070	0.076	0.029	0.000	0.000	0.000	0.000	0.012	0.195	0.204
06-Aug-14	0.006	0.041	0.001	0.000	0.000	0.000	0.000	0.012	0.091	0.112
07-Aug-14	0.000	0.000	0.136	0.016	0.000	0.000	0.000	0.013	0.326	0.340
08-Aug-14	0.000	0.044	0.006	0.000	0.000	0.000	0.000	0.023	0.134	0.134
09-Aug-14	0.018	0.017	0.006	0.000	0.000	0.000	0.000	0.033	0.074	0.091
10-Aug-14	0.012	0.019	0.000	0.000	0.000	0.000	0.000	0.000	0.069	0.151
11-Aug-14	0.056	0.054	0.024	0.000	0.000	0.000	0.000	0.029	0.282	0.469
12-Aug-14	0.006	0.038	0.000	0.000	0.000	0.000	0.000	0.030	0.552	0.959
13-Aug-14	0.005	0.079	0.012	0.000	0.000	0.000	0.000	0.028	0.124	0.133
14-Aug-14	0.000	0.000	0.007	0.000	0.000	0.000	0.000	0.023	0.030	0.061
15-Aug-14	0.002	0.000	0.057	0.000	0.011	0.000	0.000	0.000	0.078	0.116
16-Aug-14	0.008	0.064	0.000	0.000	0.117	0.000	0.000	0.017	0.257	0.295
17-Aug-14	0.003	0.000	0.000	0.000	0.000	0.000	0.000	0.016	0.019	0.071
18-Aug-14	0.000	0.009	0.000	0.000	0.000	0.000	0.000	0.000	0.009	0.283
19-Aug-14	0.012	0.012	0.013	0.000	0.000	0.000	0.000	0.030	0.319	1.8480
20-Aug-14	0.048	0.078	0.002	0.0000	0.000	0.000	0.000	0.026	0.157	0.816
21-Aug-14	0.046	0.017	0.002	0.000	0.000	0.000	0.000	0.013	0.079	0.337
22-Aug-14	0.065	0.020	0.004	0.000	0.000	0.000	0.000	0.018	0.181	0.484
23-Aug-14	0.020	0.032	0.009	0.000	0.000	0.000	0.000	0.018	0.085	0.255
24-Aug-14	0.024	0.011	0.000	0.000	0.000	0.000	0.000	0.000	0.055	0.113
25-Aug-14	0.042	0.031	0.002	0.000	0.000	0.000	0.000	0.000	0.076	0.217
26-Aug-14	0.102	0.070	0.000	0.000	0.000	0.000	0.000	0.001	0.590	0.930
27-Aug-14	0.028	0.060	0.022	0.000	0.000	0.000	0.000	0.029	0.190	0.751
28-Aug-14	0.048	0.170	0.049	0.000	0.000	0.000	0.000	0.015	0.381	0.933
29-Aug-14	0.055	0.083	0.007	0.000	0.000	0.000	0.000	0.001	0.393	0.393
30-Aug-14	0.000	0.012	0.002	0.000	0.000	0.000	0.000	0.001	0.076	0.099
31-Aug-14	0.004	0.020	0.001	0.000	0.000	0.000	0.000	0.000	0.117	0.304
TOTAL	0.707	1.267	0.402	0.016	0.129	0.000	0.000	0.466	5.540	11.752

DATE	(NET CONS.)	MAXI. DEMAND MET DURING THE DAY	TIME OF OCCURRENCE OF MAX DEMAND	SHEDDING AT THIS TIME	UN-RESTRICTED DEMAND	MAXIMUM UN-RESTRICTED DEMAND DURING THE DAY	TIME OF MAX. UN-REST. DEMAND	DEMAND AT THAT TIME	SHEDDING AT THAT TIME
	In Mus.	IN MW	IN HRS.	IN MW	IN MW	IN MW	HRS.	IN MW	IN MW
1	32	33	34	35	36=33+35	37=39+40	38	39	40
01-Aug-14	108.450	5348	15:45	18	5366	5366	15:45	5348	18
02-Aug-14	105.431	5040	00:00:39	0	5040	5040	00:00:39	5040	0
03-Aug-14	97.805	4842	23:21:08	0	4842	4842	23:21:08	4842	0
04-Aug-14	105.329	5178	15:20:04	7	5185	5185	15:20:04	5178	7
05-Aug-14	103.251	4985	22:48:12	0	4985	4985	22:48:12	4985	0
06-Aug-14	105.472	5174	15:28:25	0	5174	5174	15:28:25	5174	0
07-Aug-14	105.320	4985	22:52:18	2	4987	4987	22:52:18	4985	2
08-Aug-14	103.330	4994	16:05:15	7	5001	5001	16:05:15	4994	7
09-Aug-14	103.170	4800	23:17:36	0	4800	4800	23:17:36	4800	0
10-Aug-14	87.914	4720	00:01:38	0	4720	4720	00:01:38	4720	0
11-Aug-14	98.314	4973	22:30:32	25	4998	4998	22:30:32	4973	25
12-Aug-14	106.984	5228	15:16:09	37	5265	5265	15:16:09	5228	37
13-Aug-14	107.291	5314	15:46:26	3	5317	5317	15:46:26	5314	3
14-Aug-14	106.549	5157	15:04:09	0	5157	5157	15:04:09	5157	0
15-Aug-14	83.844	4630	00:30	0	4630	4630	00:30	4630	0
16-Aug-14	94.410	4629	22:54:20	0	4629	4629	22:54:20	4629	0
17-Aug-14	88.032	4581	23:23:53	18	4599	4599	23:23:53	4581	18
18-Aug-14	99.890	4949	23:17:33	7	4956	4960	23:00	4904	56
19-Aug-14	107.490	5233	23:16:05	54	5287	5287	23:16:05	5233	54
20-Aug-14	107.322	5395	22:43:00	29	5424	5424	22:43:00	5395	29
21-Aug-14	110.825	5267	22:38:59	37	5304	5304	22:38:59	5267	37
22-Aug-14	116.033	5455	15:32:51	0	5455	5455	15:32:51	5455	0
23-Aug-14	107.408	5296	23:38:16	3	5299	5299	23:38:16	5296	3
24-Aug-14	104.002	5241	00:01:27	0	5241	5241	00:01:27	5241	0
25-Aug-14	114.756	5463	22:57:15	18	5481	5481	22:57:15	5463	18
26-Aug-14	115.132	5498	22:48:01	19	5517	5517	22:48:01	5498	19
27-Aug-14	115.849	5507	22:49:14	82	5589	5589	22:49:14	5507	82
28-Aug-14	111.365	5362	00:00:03	28	5390	5390	00:00:03	5362	28
29-Aug-14	104.640	4986	22:57:46	59	5045	5045	22:57:46	4986	59
30-Aug-14	100.003	4896	00:01:29	3	4899	4899	00:01:29	4896	3
31-Aug-14	86.210	4475	00:05:16	0	4475	4475	00:05:16	4475	0
TOTAL	3211.821	5507	22:49:14	82	5589	5589	22:49:14	5507	82
		27.08.14			27.08.14				

LOAD PATTERN OF DELHI ON THE DAY OF PEAK DEMAND MET DURING AUGUST 2014 ON 27.08.2014- 5507MW AT 22.49.14HRS.

All figures in MW

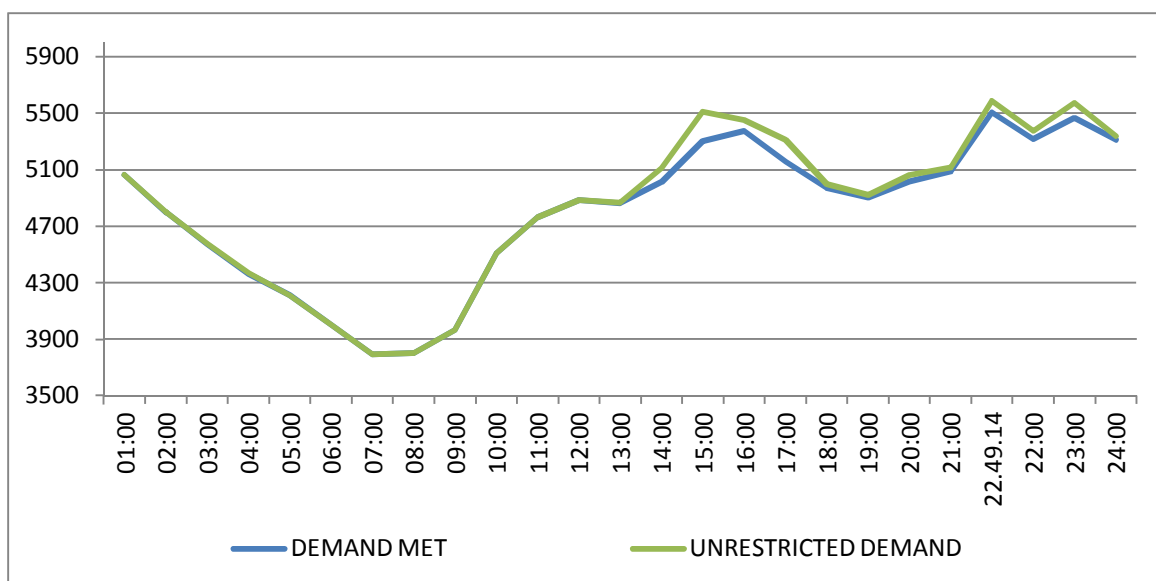
Hrs.	Demand	Load Shedding	Un-Restricted Demand
01:00	5063	2	5065
02:00	4798	1	4799
03:00	4572	3	4575
04:00	4360	10	4370
05:00	4211	0	4211
06:00	4001	0	4001
07:00	3793	0	3793
08:00	3801	0	3801
09:00	3964	0	3964
10:00	4507	0	4507
11:00	4763	0	4763
12:00	4885	0	4885
13:00	4863	4	4867
14:00	5012	98	5110
15:00	5303	208	5511
16:00	5372	80	5452
17:00	5156	155	5311
18:00	4972	25	4997
19:00	4905	15	4920
20:00	5016	45	5061
21:00	5087	29	5116
22.49.14	5507	82	5589
22:00	5316	58	5374
23:00	5464	109	5573
24:00	5311	28	5339
Total (IN MUS)	115.849	0.751	116.823



11 LOAD PATTERN OF DELHI ON THE DAY OF MAXIMUM UN-RESTRICTED DEMAND DURING AUGUST 2014 ON 27.08.2014- 5589MW AT 22.49.14HRS.

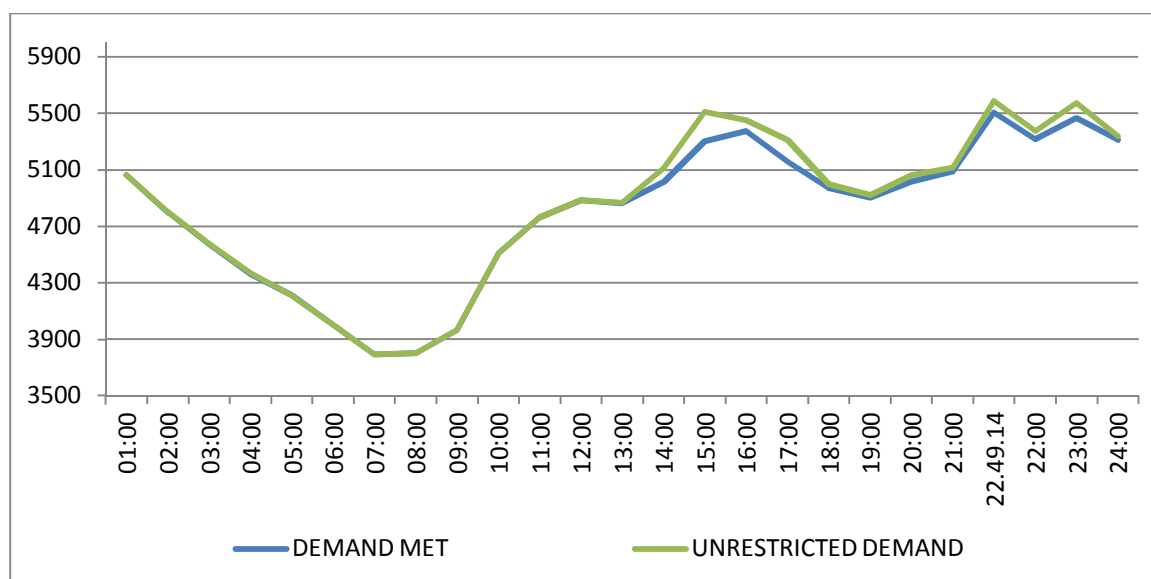
All figures in MW

Hrs.	Demand	Load Shedding	Un-Restricted Demand
01:00	5063	2	5065
02:00	4798	1	4799
03:00	4572	3	4575
04:00	4360	10	4370
05:00	4211	0	4211
06:00	4001	0	4001
07:00	3793	0	3793
08:00	3801	0	3801
09:00	3964	0	3964
10:00	4507	0	4507
11:00	4763	0	4763
12:00	4885	0	4885
13:00	4863	4	4867
14:00	5012	98	5110
15:00	5303	208	5511
16:00	5372	80	5452
17:00	5156	155	5311
18:00	4972	25	4997
19:00	4905	15	4920
20:00	5016	45	5061
21:00	5087	29	5116
22.49.14	5507	82	5589
22:00	5316	58	5374
23:00	5464	109	5573
24:00	5311	28	5339
Total (IN MUS)	115.849	0.751	116.823



12 LOAD PATTERN OF DELHI ON THE DAY OF MAXIMUM ENERGY CONSUMED DURING AUGUST 2014 – 27.08.2014 – 115.849Mus All figures in MW

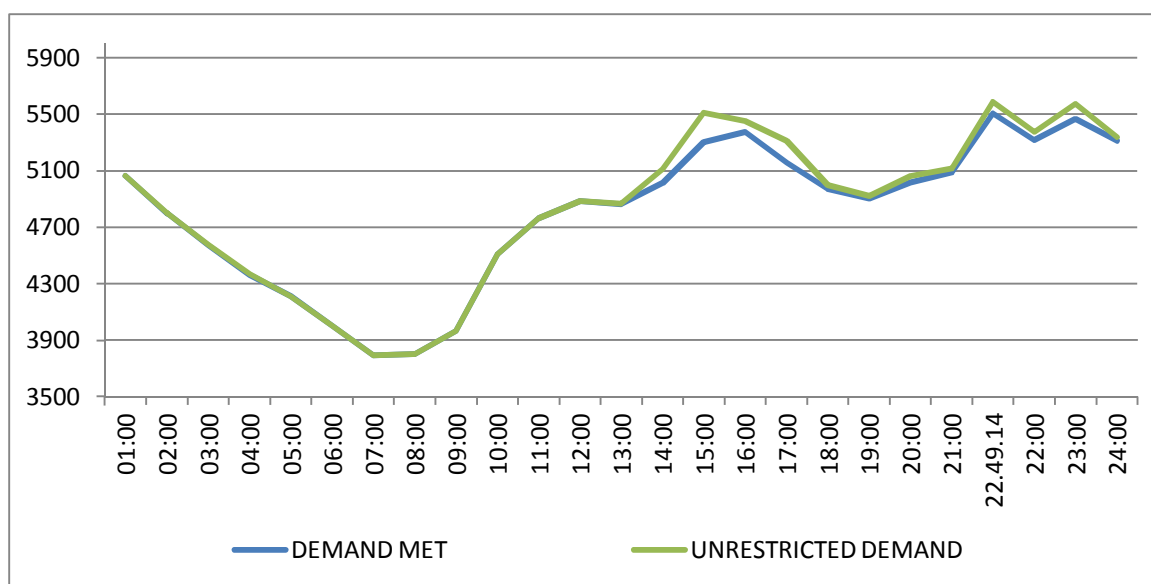
Hrs.	Demand	Load Shedding	Un-Restricted Demand
01:00	5063	2	5065
02:00	4798	1	4799
03:00	4572	3	4575
04:00	4360	10	4370
05:00	4211	0	4211
06:00	4001	0	4001
07:00	3793	0	3793
08:00	3801	0	3801
09:00	3964	0	3964
10:00	4507	0	4507
11:00	4763	0	4763
12:00	4885	0	4885
13:00	4863	4	4867
14:00	5012	98	5110
15:00	5303	208	5511
16:00	5372	80	5452
17:00	5156	155	5311
18:00	4972	25	4997
19:00	4905	15	4920
20:00	5016	45	5061
21:00	5087	29	5116
22.49.14	5507	82	5589
22:00	5316	58	5374
23:00	5464	109	5573
24:00	5311	28	5339
Total (IN MUS)	115.849	0.751	116.823



13 LOAD PATTERN OF DELHI ON THE DAY OF MAXIMUM UNRESTRICTED ENERGY DEMAND DURING AUGUST 2014 – 27.08.2014 – 116.823 Mus

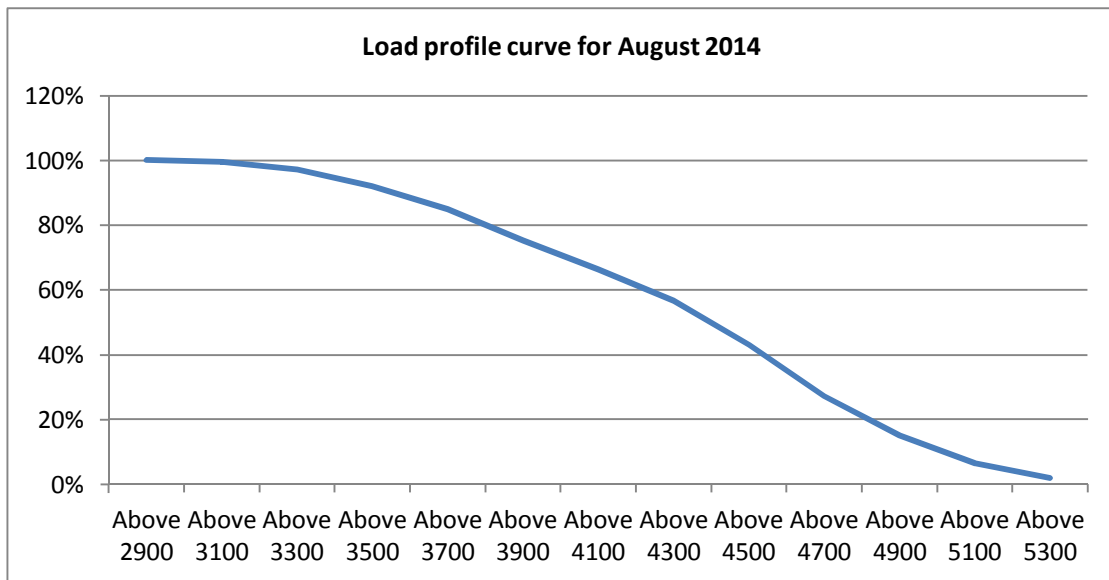
All figures in MW

Hrs.	Demand	Load Shedding	Un-Restricted Demand
01:00	5063	2	5065
02:00	4798	1	4799
03:00	4572	3	4575
04:00	4360	10	4370
05:00	4211	0	4211
06:00	4001	0	4001
07:00	3793	0	3793
08:00	3801	0	3801
09:00	3964	0	3964
10:00	4507	0	4507
11:00	4763	0	4763
12:00	4885	0	4885
13:00	4863	4	4867
14:00	5012	98	5110
15:00	5303	208	5511
16:00	5372	80	5452
17:00	5156	155	5311
18:00	4972	25	4997
19:00	4905	15	4920
20:00	5016	45	5061
21:00	5087	29	5116
22.49.14	5507	82	5589
22:00	5316	58	5374
23:00	5464	109	5573
24:00	5311	28	5339
Total (IN MUS)	115.849	0.751	116.823



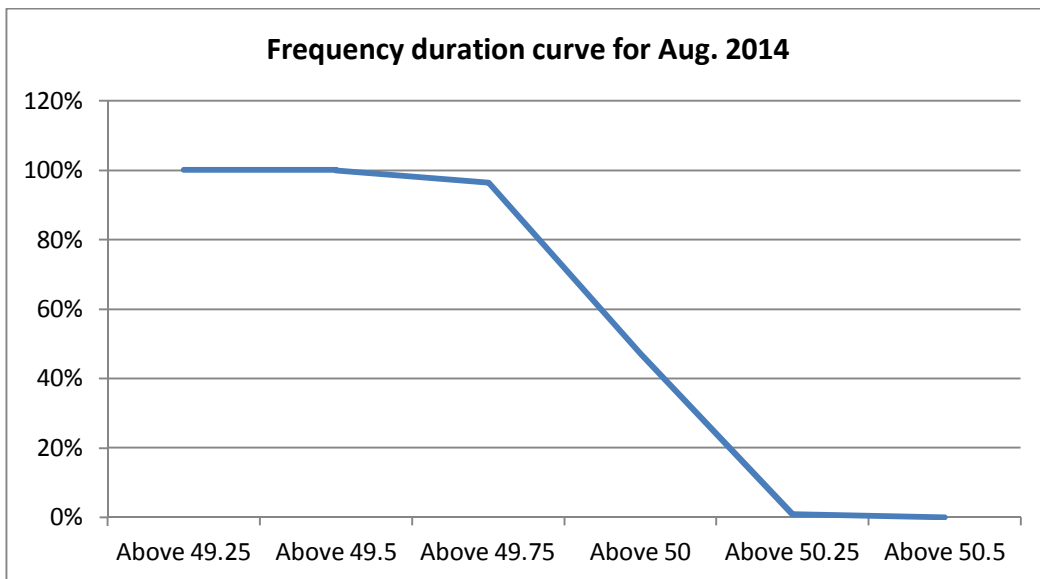
14 **LOAD DURATION CURVE FOR AUGUST 2014**

Load in MW	Percentage of Time
Above 2900	100 %
Above 3100	99.52 %
Above 3300	97.24 %
Above 3500	92.01 %
Above 3700	84.97 %
Above 3900	75.33 %
Above 4100	66.47 %
Above 4300	56.82 %
Above 4500	43.06 %
Above 4700	27.34 %
Above 4900	15.01 %
Above 5100	6.51 %
Above 5300	1.95 %



FREQUENCY ANALYSIS FOR THE MONTH OF AUGUST 2014

Frequency Range in Hz.	Percentage of time
Above 49.25	100 %
Above 49.5	99.99 %
Above 49.75	96.4 %
Above 50	47.09 %
Above 50.25	1 %
Above 50.5	0 %



16 VOLTAGE PROFILE OF 220 KV SUB-STATIONS IN DELHI DURING AUGUST 2014

All figures in kV

Date	NARELA		GAZIPUR	
	Max	Min	Max	Min
01-Aug-14	221.44	212.15	225.57	213.19
02-Aug-14	222.99	214.61	228.28	218.47
03-Aug-14	222.21	214.35	228.02	218.99
04-Aug-14	223.63	212.03	228.15	212.41
05-Aug-14	221.05	210.74	228.02	216.54
06-Aug-14	220.92	209.45	226.99	213.19
07-Aug-14	220.92	208.03	226.60	214.48
08-Aug-14	218.86	207.90	227.37	214.35
09-Aug-14	--	--	--	--
10-Aug-14	220.80	209.19	229.18	218.47
11-Aug-14	221.70	209.19	228.15	213.83
12-Aug-14	222.99	212.15	226.99	212.41
13-Aug-14	--	--	--	--
14-Aug-14	220.41	210.74	224.79	210.87
15-Aug-14	224.66	212.03	226.08	212.41
16-Aug-14	222.09	187.01	221.44	207.64
17-Aug-14	221.44	210.61	220.80	208.54
18-Aug-14	221.44	212.15	224.79	211.51
19-Aug-14	220.41	209.96	224.41	208.80
20-Aug-14	221.18	208.80	219.89	206.87
21-Aug-14	220.28	211.90	217.31	205.45
22-Aug-14	222.21	210.22	219.76	204.80
23-Aug-14	222.34	212.54	244.66	--
24-Aug-14	224.28	211.25	226.34	208.67
25-Aug-14	222.21	209.96	221.70	204.80
26-Aug-14	223.38	210.48	221.83	204.03
27-Aug-14	222.34	210.74	224.28	203.77
28-Aug-14	221.57	211.38	221.83	205.06
29-Aug-14	222.86	213.83	224.28	211.38
30-Aug-14	223.38	214.61	224.79	180-43
31-Aug-14	224.66	217.06	227.63	--

17 VOLTAGE PROFILE OF 400 KV SUB-STATIONS IN DELHI DURING AUGUST 2014
All figures in kV

Date	400kV Barnauli Grid Sub-Station				
	Max KV	Max Time	Min KV	Min Time	Average KV
01-Aug-14	406.61	--	389.25	--	396.45
02-Aug-14	410.36	07.50.59	391.60	14.28.52	400.40
03-Aug-14	408.72	06.06.50	394.88	22.12.44	402.15
04-Aug-14	411.06	06.03.39	388.55	14.52.33	400.28
05-Aug-14	410.12	04.04.47	393.24	22.21.51	401.23
06-Aug-14	409.65	06.04.24	389.02	14.34.45	400.05
07-Aug-14	409.65	05.01.19	387.61	14.41.32	399.30
08-Aug-14	407.78	06.04.01	388.08	15.00.50	398.43
09-Aug-14	--	--	--	--	--
10-Aug-14	412.47	17.02.46	391.60	00.12.39	403.90
11-Aug-14	411.53	07.06.13	390.19	14.39.12	393.21
12-Aug-14	408.01	08.01.53	387.85	14.24.55	397.58
13-Aug-14	--	--	--	--	--
14-Aug-14	406.61	06.04.01	390.19	14.45.48	397.86
15-Aug-14	411.06	06.04.01	394.41	22.15.53	403.08
16-Aug-14	407.54	06.21.55	388.55	19.36.56	398.88
17-Aug-14	406.84	08.02.28	387.85	23.07.12	388.79
18-Aug-14	407.31	06.04.41	389.02	15.39.13	397.23
19-Aug-14	407.31	06.03.41	388.78	14.45.58	396.67
20-Aug-14	405.67	07.10.55	388.08	14.19.02	394.95
21-Aug-14	404.26	06.14.26	--	--	--
22-Aug-14	--	--	--	--	--
23-Aug-14	407.78	18.19.17	--	--	--
24-Aug-14	417.86	18.03.44	390.19	22.19.28	400.91
25-Aug-14	411.06	06.01.54	388.08	15.25.48	398.64
26-Aug-14	410.83	06.01.54	387.61	00.09.23	393.53
27-Aug-14	411.53	06.01.54	388.08	15.40.56	396.91
28-Aug-14	407.78	06.04.05	389.25	11.28.28	398.19
29-Aug-14	410.36	06.01.56	391.13	15.40.41	400.76
30-Aug-14	409.65	07.02.22	389.02	11.54.07	399.92
31-Aug-14	412.47	08.02.13	399.34	19.25.13	406.69

Date	400kV Bawana Grid Sub-Station				
	Max KV	Max Time	Min KV	Min Time	Average KV
01-Aug-14	410.36	--	398.16	--	404.16
02-Aug-14	413.87	07.50.39	400.98	00.12.20	406.82
03-Aug-14	413.87	16.05.12	403.79	00.07.29	408.74
04-Aug-14	415.75	06.03.29	399.10	14.49.53	407.79
05-Aug-14	417.86	04.04.57	401.92	14.25.35	408.77
06-Aug-14	414.81	06.04.24	398.40	14.32.15	407.15
07-Aug-14	414.34	08.01.09	398.63	14.46.12	406.97
08-Aug-14	413.87	06.05.01	398.40	14.47.10	406.45
09-Aug-14	--	--	--	--	--
10-Aug-14	419.27	17.06.06	400.51	00.12.49	412.14
11-Aug-14	416.69	07.02.33	400.51	14.39.02	402.62
12-Aug-14	413.87	06.30.17	395.82	14.26.25	405.02
13-Aug-14	--	--	--	--	--
14-Aug-14	413.17	06.05.01	398.63	14.43.08	404.37
15-Aug-14	416.22	06.05.01	400.51	14.30.08	408.88
16-Aug-14	413.41	06.25.35	397.46	19.36.36	405.82
17-Aug-14	414.81	06.42.32	398.63	22.44.14	405.56
18-Aug-14	412.00	06.04.21	399.10	22.25.30	404.84
19-Aug-14	412.70	06.03.41	397.46	14.45.28	404.01
20-Aug-14	412.23	07.11.35	396.99	12.34.05	402.80
21-Aug-14	407.54	18.05.32	395.82	16.41.27	401.13
22-Aug-14	411.53	06.06.06	394.65	14.36.05	401.99
23-Aug-14	411.30	06.11.24	396.99	00.08.11	403.71
24-Aug-14	416.92	18.03.54	396.05	22.15.27	403.92
25-Aug-14	410.83	06.02.54	392.30	15.26.08	400.66
26-Aug-14	411.06	06.02.54	392.30	00.08.23	398.57
27-Aug-14	412.00	06.02.54	--	--	--
28-Aug-14	--	--	--	--	--
29-Aug-14	--	--	--	--	--
30-Aug-14	402.15	14.05.43	--	--	--
31-Aug-14	--	--	--	--	--

18 DETAILS OF LUMPED CAPACITORS AT NEAREST 220 KV SUBSTATION

Sl. No	SUB-STATION	INSTALLED CAPACITY			
		66KV	33kV	11kV	TOTAL
1	IP YARD		30		30
1	Kamla Market			16.35	16.35
2	Minto Road				0
3	GB Pant Hosp			15.88	15.88
4	Delhi Gate			10.9	10.9
5	Tilakmarg			5.04	5.04
7	Cannaught Place			10.08	10.08
8	Kilokri		10.08	10.48	20.56
9	NDSE				0
11	Nizamuddin				0
12	Exhibition-I				0
13	Exhibition-II				0
14	Defence Colony				0
15	IG Stadium		10.08	5.45	15.53
16	Lajpat Nagar				0
17	IP Estate			10.9	10.9
	LT BYPL				5.6
		0	50.16	85.08	140.84
2	Electric Lane				
1	Electric Lane			5.04	5.04
2	Scindia House			5.04	5.04
3	Raisina Road			10.08	10.08
4	Raja Bazar			10.08	10.08
	LT NDMC				12
		0	0	30.24	42.24
3	RPH Station		20		20
1	Lahori Gate			10.49	10.49
2	Jama Masjid			10.48	10.48
4	Kamla Market				0
5	Minto Road			10.9	10.9
6	GB Pant Hosp				0
7	IG Stadium				0
	LT BYPL				3
		0	20	31.87	54.87
4	Parkstreet S/stn	20	20		40
1	Shastri Park		10.896	5.45	16.346
2	Faiz Road			18.05	18.05
3	Motia Khan			16.3	16.3
4	Prasad Nagar			16.25	16.25
5	Anand Parbat			10.8	10.8
6	Shankar Road			5.04	5.04
7	Rama Road			0	0
8	Baird Road			10.08	10.08
9	Hanuman Road			5.04	5.04
10	Pusa			5.44	5.44
11	Ridge Valley			0	0
12	B. D. Marg			0	0
13	Nirman Bhawan			5.04	5.04
	LT BYPL			0	30.1
		20.00	30.90	97.49	178.486
5	Naraina S/stn		20	5.04	25.04
1	DMS			10.85	10.85
2	Mayapuri		10.87	10.4	21.27
3	Inderpuri		10	4.8	14.8
4	Rewari line				0
5	Khyber Lane		10.05		10.05
6	Kirbi Place		10.05		10.05
7	Payal			7.2	7.2
8	Saraswati Garden			10.88	10.88
		0	60.97	49.17	110.14

Sl. No	SUB-STATION	INSTALLED CAPACITY			
		66KV	33kV	11kV	TOTAL
6	Mehrauli S/stn	80		5.04	85.04
1	Adchini			14.61	14.61
2	Andheria Bagh			10.85	10.85
3	IIT			10.9	10.9
4	JNU		10.03	10.03	20.06
5	Bijwasan			15.47	15.47
6	DC Saket			9.98	9.98
7	Malviya Nagar				0
8	C Dot			10.48	10.48
9	Vasant kunj B-Blk	21.79		10.9	32.69
10	Vasant kunj C-Blk	20.16		10.48	30.64
11	Palam				0
12	IGNOU			5.04	5.04
13	R. K. Puram-I			10.07	10.07
14	Vasant Vihar			19.25	19.25
15	Pusp Vihar			10.44	10.44
16	Bhikaji Cama Place		10.08	10.07	20.15
	LT BRPL				25
		121.95	20.11	163.61	330.67
7	Vasantkunj S/stn	40		5.04	45.04
1	R. K. Puram-II			10.08	10.08
2	Vasant kunj C-Blk				0
3	Vasant kunj D-Blk			9.63	9.63
4	Ridge Valley				0
	LT BRPL				33.2
		40	0	24.75	97.95
8	Okhla S/stn	60	10	5.04	75.04
1	Balaji			10.8	10.8
2	East of Kailash			15.89	15.89
3	Alaknanda			16.3	16.3
4	Malviya Nagar	21.79		10.85	32.64
5	Masjid Moth			16.3	16.3
6	Nehru Place			21.34	21.34
7	Okhla Ph-I	21.79		16.3	38.09
8	Okhla Ph-II		20.93	15.47	36.4
9	Shivalik			10.8	10.8
10	Batra			15.9	15.9
11	VSNL			10.9	10.9
12	Siri Fort			10.49	10.49
13	Tuglakabad			10.85	10.85
	LT BRPL				59
		103.58	30.93	187.23	380.74
9	Lodhi Road S/stn		20		20
1	Defence Colony		14.85		14.85
2	Hudco		10.9		10.9
3	Lajpat Nagar		10.9		10.9
4	Nizamuddin		10.44		10.44
5	Vidyut Bhawan				0
6	Ex. Gr. II				0
7	IHC				0
	LT BRPL				42
		0	67.09	0	109.09
10	Sarita Vihar S/stn	20		5.04	25.04
1	Sarita Vihar			10.07	10.07
2	MCIE			10.06	10.06
3	Mathura Road	20.16		11.69	31.85
4	Jamia Millia			10.89	10.89
5	Sarai Julena		10.08	16.29	26.37
6	Jasola			5.44	5.44
	LT BRPL				23.6
		40.16	10.08	69.48	143.32

Sl. No	SUB-STATION	INSTALLED CAPACITY			
		66KV	33kV	11kV	TOTAL
11	Wazirabad				
1	Bhagirathi		14.4	10.9	25.3
2	Ghonda	21.79	22.56	15.94	60.29
3	Seelam Pur		10.08	21.39	31.47
4	Dwarkapuri			15.46	15.46
5	Nandnagri	20.16		16.35	36.51
6	Yamuna Vihar			16.2	16.2
7	East of Loni Road			10.8	10.8
8	Shastri Park			10.9	10.9
9	Karawal Nagar			5.4	5.4
10	Sonia Vihar			7.2	7.2
	LT BYPL				10
		41.95	47.04	130.54	229.53
12	Geeta Colony				
1	Geeta Colony				0
2	Kanti Nagar			10.49	10.49
3	Kailash Nagar			10.9	10.9
4	Seelam Pur			15.48	15.48
5	Shakar Pur				0
	LT BYPL				5.8
		0	0	36.87	42.67
13	Gazipur S/stn	40		5.04	45.04
1	Dallupura	28.8		10.9	39.7
2	Vivek Vihar			9.57	9.57
3	GT Road			10.85	10.85
4	Kondli	20.16		10.85	31.01
5	MVR-I			10.9	10.9
6	MVR-II	20.16		10.9	31.06
7	PPG Ind. Area			10.06	10.06
	LT BYPL				20.6
		109.12	0	79.07	208.79
14	Patparganj S/stn	40	20	5.04	65.04
1	GH-I	19.89		10.45	30.34
2	GH-II	20.09		10.9	30.99
3	CBD		10.03	15.48	25.51
4	Guru Angad Nagar			15.49	15.49
5	Karkadooma		10.8	10.44	21.24
6	Preet Vihar			10.07	10.07
7	CBD-II			10.8	10.8
8	Shakarpur			10.8	10.8
9	Jhilmil			10.8	10.8
10	Dilshad Garden	20.16		16.35	36.51
11	Khichipur	21.79		10.49	32.28
12	Mother Dairy				0
13	Scope Building				0
14	Vivek Vihar				0
15	Akhardham			14.6	14.6
	LT BYPL				23.3
		121.93	40.83	151.71	337.77
15	Najafgarh S/stn	60		5.04	65.04
1	A4 Paschim Vihar			10.8	10.8
2	Nangloi	21.73		15.84	37.57
3	Nangloi WW	20.89		10.85	31.74
4	Pankha Road			15.88	15.88
5	Jaffarpur			15.43	15.43
7	Inst. Area Janakpuri			17.6	17.6
8	Paschimpuri		10.05	15.47	25.52
9	Paschim Vihar	41.83		15.43	57.26
10	Mukherjee Park			20.83	20.83
11	Udyog Nagar			10.43	10.43
12	Choukhandi			10.07	10.07
	LT BRPL				27
		144.45	10.05	163.67	345.17

Sl. No	SUB-STATION	INSTALLED CAPACITY			
		66KV	33kV	11kV	TOTAL
16	Pappankalan-I S/stn	20		5.04	25.04
1	Bindapur Grid G-3 PPK	21.73		15.85	37.58
2	Bodella-I	20.1		16.24	36.34
3	Bodella-II	21.73		17.64	39.37
4	DC Janakpuri			10.03	10.03
5	G-2 PPK			10.8	10.8
6	G-5 PPK			15.51	15.51
7	G-6 PPK			5.4	5.4
8	G-15 PPK			10.8	10.8
9	Harinagar	21.18		16.25	37.43
10	Rewari line			5.44	5.44
	LT BRPL				13.5
		104.74	0	129	247.24
17	BBMB Rohtak Road				
1	S.B. Mill			10.07	10.07
2	Rama Road			10.88	10.88
3	Ram Pura			10.48	10.48
4	Rohtak Road			8.04	8.04
5	Vishal			10.4	10.4
6	Tri Nagar			5.44	5.44
7	Madipur			10.43	10.43
8	Sudershan Park			10.08	10.08
9	Kirti Nagar			5.44	5.44
		0	0	81.26	81.26
18	Shalimarbagh S/stn		40	6	46
1	S.G.T. Nagar			5.44	5.44
2	Wazirpur-1			17.18	17.18
3	Wazirpur-2			11.39	11.39
4	Ashok Vihar			5.44	5.44
5	Rani Bagh			10.88	10.88
6	Haiderpur			11.39	11.39
7	SMB FC			5.44	5.44
8	SMB KHOSLA			5.44	5.44
	LT TPDDL				30
		0	40	78.6	148.6
19	Subzimandi S/stn			6	6
1	Shakti Nagar			5.94	5.94
2	Gulabibagh			10.88	10.88
3	Shahzadabagh			13.68	13.68
4	DU			5.44	5.44
5	Tripolia			10.88	10.88
	B. G. Road			5.4	5.4
	LT BYPL				0.9
	LT TPDDL				20
		0	0	58.22	79.12
20	Narela S/stn	40		5.04	45.04
1	A-7 Narela			10.88	10.88
2	AIR Kham pur			6	6
3	Ashok vihar			10.48	10.48
4	Azad Pur			5.44	5.44
5	Tri Nagar			5.44	5.44
6	Badli	20		5.95	25.95
7	DSIDC Narela-1			5.95	5.95
8	GTK			5.44	5.44
9	Jahangirpuri	20	10	0	30
10	Bhalswa			3.6	3.6
	LT TPDDL				10
		80	10	64.22	164.22

Sl. No	SUB-STATION	INSTALLED CAPACITY			
		66KV	33kV	11kV	TOTAL
21	Gopalpur S/stn		30	5.04	35.04
1	Azad Pur			10.88	10.88
2	Hudson Lane			5.44	5.44
3	Wazirabad			2.4	2.4
4	Indra Vihar			5.44	5.44
6	GTK Road			5.94	5.94
7	Jahangirpuri		10	5.95	15.95
8	Civil lines			5.44	5.44
9	Pitam Pura-1			5.44	5.44
10	Pitam Pura-3			5.44	5.44
11	Air Khampur			5.95	5.95
12	SGT Nagar			5.95	5.95
13	Tiggipur			10.88	10.88
	LT TPDDL				29
		0	40	80.19	149.19
22	Rohini S/stn	40		6	46
1	Rohini Sec-22			10.88	10.88
2	Rohini Sec-23	20		5.44	25.44
3	Rohini Sec-24			5.44	5.44
4	Rohini-1			5.44	5.44
5	Rohini-3			5.95	5.95
6	Rohini-4			11.39	11.39
7	Rohini-5			11.39	11.39
8	Rohini-6			5.95	5.95
9	Mangolpuri-1			16.83	16.83
10	Mangolpuri-2	20		5.94	25.94
11	Pitam Pura-1	20		5.04	25.04
12	Pitam Pura-2			10.48	10.48
13	Rohini DC-1			14.4	14.4
	LT TPDDL				30
		100	0	120.57	250.57
23	Kanjhawa S/stn	20		5.04	25.04
1	Bawana Clear Water			10.88	10.88
2	Pooth Khoord			5.44	5.44
		20	0	21.36	41.36
24	BAWANA S/stn				
1	Bawana S/stn No. 6			10.88	10.88
2	Bawana S/stn No. 7				0
		0	0	10.88	10.88
25	Kashmerigate S/stn			5.04	5.04
1	Civil lines			5.44	5.44
2	Town Hall			8.64	8.64
3	Fountain			5.45	5.45
	LT BYPL				2.7
		0	0	24.57	27.27
26	Pappankalan-II				
1	DMRC-I				0
2	DMRC-II				0
27	Trauma Center (AIIMS)				
1	AIIMS		13.26	5.04	18.3
2	Trauma Center			10.08	10.08
3	Netaji Nagar			15.12	15.12
4	Sanjay Camp			10.08	10.08
5	Kidwai Nagar			5.04	5.04
6	SJ Airport			5.04	5.04
	Race Course			5.04	5.04
		0	13.26	55.44	68.7

Sl. No	SUB-STATION	INSTALLED CAPACITY			
		66KV	33kV	11kV	TOTAL
28	MUNDKA				
	Rohini-2			11.39	11.39
	LT BRPL				18.5
		0	0	11.39	29.89
29	DSIDC BAWANA				
	DSIDC NRL-1	20			20
	DSIDC NRL-2			10.88	10.88
		20	0	10.88	30.88
30	RIDGE VALLEY				
	Keventry Diary			10.08	10.08
	Nehru Park			5.04	5.04
	Bapu Dham			10.08	10.08
		0	0	25.2	25.2
31	IP EXTN (PRAGATI)				
	Vidyut Bhawan			10.08	10.08
	Dalhousie Road			5.04	5.04
	School Lane			5.04	5.04
	LT NDMC				12.29
		0	0	20.16	32.45
	TOTAL CAPACITY	1067.9	491.4	2092.7	4139

Utility	HT	LT	Total
BYPL	864	102	966
TPDDL	657	119	776
NDMC	180	24	204
DTL	754	0	754
BRPL	1158	242	1400
RPH	20	0	20
MES	20	0	20
TOTAL	3652	487	4139

20 DETAILS OF BREAK-DOWNS DURING THE MONTH OF AUGUST 2014

SL NO	OCCURRENCE OF BREAK-DOWN		DETAILS OF THE BREAKDOWN	TIME OF RESTORATION		REMARKS
	DATE	TIME		DATE	TIME	
1	01-08-14	09:59	KANJHAWALA 220/66kV 100MVA Tx-I	01-08-14	12:55	TR. TRIPPED ON DIFFERENTIAL B PHASE, 66KV I/C-I TRIP ON 295C
2	01-08-14	17:30	220KV GAZIPUR - MAHARANIBAGH CKT. -II	01-08-14	17:48	AT MAHARANI BAGH CKT. TRIPPED ON E/F AT GAZIPUR NO TRIPPING
3	01-08-14	17:30	220kv GAZIPUR - BTPS CKT	01-08-14	18:12	AT BTPS CKT. TRIPPED ON R PHASE, E/F, DISTANCE 23.8KM AT GAZIPUR NO TRIPPING
4	01-08-14	17:30	220KV GAZIPUR - MAHARANIBAGH CKT. -I	01-08-14	18:09	AT MAHARANIBAGH CKT. TRIPPED ON E/F AT GAZIPUR NO TRIPPING
5	02-08-14	10:29	400kV Bawana-Mundka Ckt-I	02-08-14	10:39	AT MUNDKA CKT. TRIPPED WITHOUT INDICATION AT BAWANA NO TRIPPING
6	02-08-14	10:53	220kv MEHRAULI - BTPS CKT. - II	02-08-14	22:15	AT BTPS CKT. TRIPPED ZONE-I, R PHASE, E/F AT MEHRAULI CKT. TRIPPED ON ZONE-I, 186, 186, TRIPPED PHASE ABC, FAULT LOCATION 10.34KMS
7	02-08-14	11:00	220kv MEHRAULI - BTPS CKT. - I	02-08-14	11:35	AT BTPS CKT. TRIPPED ON ZONE-2, B PHASE AT MEHRAULI NO TRIPPING
8	03-08-14	05:20	NAJAFGARH 66/11kV, 20MVA Tx-I	03-08-14	07:17	11KV I/C-I TRIPPED ON E/F, 11kv NAJAFGARH CKT. -I TRIPPED ON E/F , O/C, R&B PHASE. HEAVY SOUND OBSERVED ON THE BREAKER OF THE CKT. 11KV 1/2 BUS ALSO FLASHED.
9	03-08-14	06:37	LODHI RD 33/11kV, 20MVA Tx-I	03-08-14	06:45	TR. TRIPPED ON DIFFERENTIAL
10	03-08-14	12:14	220kv BAMNAULI-PAPPANKALAN-II CKT-II	03-08-14	12:44	AT BAMNAULI CKT. TRIPPED ON SOTF AT PAPPANKALAN-II NO TRIPPING
11	03-08-14	12:14	220kv BAMNAULI-PAPPANKALAN-II CKT-I	03-08-14	12:44	AT BAMNAULI CKT. TRIPPED ON DIST PROT, 186 A&B AT PAPPANKALAN-II CKT. TRIPPED WITHOUT INDICATION
12	03-08-14	15:01	220KVBAWANA- ROHINI CKT-II	03-08-14	15:20	AT BAWANA CKT. TRIPPED ON DIST. PROT. AT ROHINI NO TRIPPING
13	03-08-14	15:01	220kv ROHINI-SHALIMARBAGH CKT-II	03-08-14	15:12	AT SHALIMARBAGH CKT. TRIPPED ON DIST PROT,
14	03-08-14	15:01	WAZIRPUR 220/33kV 100MVA Tx-I	03-08-14	16:52	TR. TRIPPED ON GENERAL TRIP, 81, 86
15	04-08-14	17:27	INDRAPRASTHA POWER 220/33kV 100MVA Tx-II	04-08-14	17:40	TR. TRIPPED WITHOUT INDICATION 220KV SIDE
16	04-08-14	20:16	220kv BAWANA-DSIIDC BAWANA CKT-I	04-08-14	20:34	CKT. TRIPPED ON DIST PROT.
17	04-08-14	20:40	220kv BAWANA-DSIIDC BAWANA CKT-I	04-08-14	21:20	AT NARELA CKT. TRIPPED ON E/F AT BAWANA NO TRIPPING
18	04-08-14	21:24	220kv DSIIIDC BAWANA-NARELA CKT-I	05-08-14	08:23	AT NARELA TRIPPED ON E/F AT DSIIIDC BAWANA NO TRIPPING
19	04-08-14	21:24	DSIIIDC Bawana 66 KV DSIDC-2 CKT-1	04-08-14	23:02	CKT. TRIPPED ON BUS BAR PROT.
20	04-08-14	21:24	DSIIIDC Bawana 220/66kV 100MVA Tx-II	04-08-14	22:13	TR. TRIPPED ON BUS BAR PROTECTION AT 66KV SIDE
21	04-08-14	21:24	DSIIIDC Bawana 220/66kV 100MVA Tx-III	04-08-14	21:26	TR. TRIPPED ON BUS BAR PROT. 66KV SIDE
22	04-08-14	21:24	DSIIIDC Bawana 66 KV DSIDC-2 CKT-2	04-08-14	23:25	CKT. TRIPPED ON BUS BAR PROT.
23	04-08-14	23:52	DSIIIDC Bawana 220/66kV 100MVA Tx-II	04-08-14	23:58	CKT. TRIPPED ON BUS BAR PROT.
24	04-08-14	23:52	DSIIIDC Bawana 66 KV DSIDC-2 CKT-1	05-08-14	06:58	CKT. TRIPPED ON BUS BAR PROT.
25	04-08-14	23:52	DSIIIDC Bawana 66 KV DSIDC-2 CKT-2	05-08-14	06:58	CKT. TRIPPED ON BUS BAR PROT.
26	04-08-14	23:52	DSIIIDC Bawana 220/66kV 100MVA Tx-III	04-08-14	23:58	CKT. TRIPPED ON BUS BAR PROT.
27	05-08-14	12:01	DSIIIDC Bawana 220/66kV 100MVA Tx-III	05-08-14	12:04	220KV BUS COUPLER TRIPPED ON 86 & 96 ALONGWITH 66KV I/C-II.

SL NO	OCCURRENCE OF BREAK-DOWN		DETAILS OF THE BREAKDOWN	TIME OF RESTORATION		REMARKS
	DATE	TIME		DATE	TIME	
28	05-08-14	12:01	DSIIDC Bawana 220/66kV 100MVA Tx-II	05-08-14	12:04	220KV BUS COUPLER TRIPPED ON 86 & 96 ALONGWITH 66KV I/C-I
29	05-08-14	13:02	WAZIRABAD 220/66kV 100MVA Tx-II	09-08-14	14:49	TR. TRIPPED ON SPR RELAY, LOW OIL LEVEL INDICATION ALONGWITH 66KV GHONDA CKT. -I ON E/F
30	05-08-14	10:25	220kV BAWANA-DSIIDC BAWANA CKT-I	05-08-14	11:04	AT DSIDC BAWANA CKT. TRIPPED ON E/F ALONGWITH 66KV DSIDC CKT I & II AT BAWANA NO TRIPPING
31	06-08-14	00:55	INDRAPRASTHA POWER 33kV CONNAUGHT PLACE CKT (BAY-28)	28-08-14	11:18	THE FEEDER TRIPPED ON E/F (CABLE FAULTY) NDMC RECTIFIED THE CABLE AND GAVE CLEARANCE ON 21.08.2014 AT 02.15HRS. BUT COULD NOT BE NORMALIZED DUE TO CONTROL CABLE PROBLEM WHICH WAS RECTIFIED BY I.P.STAFF LATER ON.
32	06-08-14	14:02	GOPALPUR 33/11kV, 16MVA Tx-I	06-08-14	14:26	TR. TRIPPED ON WITHOUT INDICATION
33	06-08-14	20:27	PARKSTREET 220/33kV 100MVA Tx-II	06-08-14	21:25	TR. TRIPPED ON DIFFERENTIAL, 33KV BUS COUPLER TRIPPED ON O/C, E/F, ITS R&B PHASE CT DAMAGED
34	06-08-14	20:27	PARKSTREET 220/33kV 100MVA Tx-I	07-08-14	11:20	TR. TRIPPED ON DIFFERENTIAL, 33KV BUS COUPLER TRIPPED ON O/C, E/F, ITS R&B PHASE CT DAMAGED
35	07-08-14	00:34	MUNDKA 220/66kV 160MVA Tx-II	07-08-14	10:49	TR. TRIPPED ON DIST PROT, B PHASE, 86
36	07-08-14	10:45	220kV GAZIPUR - BTPS CKT	08-08-14	16:05	AT BTPS CKT. TRIPPED ON DIST PROT, R PHASE ZONE-2 AT GAZIPUR ONLY SUPPLY FAIL
37	07-08-14	10:45	220KV GAZIPUR - MAHARANIBAGH CKT. -I	07-08-14	11:50	AT GAZIPUR CKT TRIPPED ON E/F AT MAHARANI BAGH CKT. TRIPPED ON R PHASE TO GROUND FAULT
38	07-08-14	10:45	220KV GAZIPUR - MAHARANIBAGH CKT. -II	08-08-14	13:47	AT GAZIPUR NO TRIPPING AT MAHARANIBAGH R PHASE TO GROUND FAULT, CONDUCTOR ALSO SNAPPED NEAR 66KV KHICHRIPUR S/STN.
39	07-08-14	15:20	DIAL 66kV DIAL CKT-II	07-08-14	15:25	CKT. TRIPPED WHILE FILLING SF-6 GAS
40	07-08-14	16:17	INDRAPRASTHA POWER 220/33kV 100MVA Tx-I	07-08-14	17:04	TR. TRIPPED ON REF ON HV SIDE
41	07-08-14	16:19	GEETA COLONY 220/33kV 100MVA Tx-II	07-08-14	16:33	33KV I/C-II TRIPPED WITHOUT INDICATION
42	07-08-14	16:19	220kV WAZIRABAD-GEETA COLONY CKT-II	07-08-14	16:33	AT GEETA COLONY CKT. TRIPPED ON DIST PROT, AT WAZIRABA CKT. TRIPPED ON GEN. TRIP, RYB PHASE, ZONE-I, DISTANCE 3.1KMS
43	07-08-14	17:15	NAJAFGARH 66/11kV, 20MVA Tx-I	07-08-14	19:10	I/C TRIPPED WITHOUT INDICATION
44	08-08-14	15:00	220kV GEETA COLONY-PATPARGANJ CKT -II	08-08-14	15:13	AT PATPARGANJ CKT. TRIPPED ON 186, 186, TRIP ABC, ZONE-I, DISTANCE 3.55KMS. AT GEETA COLONY CKT. TRIPPED ON ABC, DIST PROT, O/C, E/F, ZONE-I, DISTANCE 1.419KM
45	08-08-14	17:52	220KV GAZIPUR - MAHARANIBAGH CKT. -II	08-08-14	18:24	AT GAZIPUR CKT. TRIPPED ON E/F AT MAHARANI BAGH CKT. TRIPPED ON E/F, R PHASE, 3.2KA, 86A & 86B
46	08-08-14	17:52	220kV GAZIPUR - BTPS CKT	08-08-14	19:21	AT BTPS CKT. TRIPPED ON R PHASE, E/F, 3.7KMS. AT GAZIPUR NO TRIPPING
47	08-08-14	17:52	220KV GAZIPUR - MAHARANIBAGH CKT. -I	08-08-14	18:20	AT GAZIPUR CKT. TRIPPED ON E/F AT MAHARANIBAGH CKT. TRIPPED ON E/F, R PHASE, 3.5KA, 86A & 86B
48	09-08-14	04:00	220KV GAZIPUR - MAHARANIBAGH CKT. -I	09-08-14	14:41	AT MAHARANI BAGH CKT. TRIPPED ON UV, Z-3, B PHASE JUMPER SNAPPED ON 5TH TOWER FROM MAHARANI BAGH AT GAZIPUR CKT. TRIPPED 220KV BREAKER PUT OFF
49	09-08-14	04:01	RIDGE VALLEY 220/66kV 160MVA Tx-II	09-08-14	04:25	TR. TRIPPED ON E/F, 86, 86C
50	09-08-14	16:03	GOPALPUR 33/11kV, 16MVA Tx-I	09-08-14	16:08	11KV I.C-I TRIPPED ON E/F

SL NO	OCCURRENCE OF BREAK-DOWN		DETAILS OF THE BREAKDOWN	TIME OF RESTORATION		REMARKS
	DATE	TIME		DATE	TIME	
51	10-08-14	04:00	220KV GAZIPUR - MAHARANIBAGH CKT. -I	10-08-14	14:41	AT MAHARANI BAGH CKT. TRIPPED ON UV, B PHASE JUMPER SNAPPED ON 5th TOWER FROM MAHARANI BAGH AT GAZIPUR 220KV BREAKER PUT OFF
52	10-08-14	04:01	RIDGE VALLEY 220/66kv 160MVA Tx-II	10-08-14	04:25	TR. TRIPPED ON E/F, 86, 86C
53	10-08-14	11:42	220kv PRAGATI - SARITA VIHAR CKT-II	10-08-14	12:28	AT PRAGATI CKT. TRIPPED ON ACTIVE GROUP -I, TRIP PHASE ABC, DIST PROT, ZONE-I, DIST 4.63KM AT SARITA VIHAR CKT. TRIPPED ON DIST PROT, 186A, 186B, 186X, ZONE-I, DIST PROT, DISTANCE 2.16KMS
54	10-08-14	14:05	VASANT KUNJ 66/11kv, 20MVA Tx-I	10-08-14	18:25	TR. TRIPPED ON BUCHOLZ
55	11-08-14	04:06	220kv BAMNAULI-PAPPANKALAN-I CKT-II	11-08-14	04:22	AT PAPANALAN -I CKT. TRIPPED ON TRIP CKT. FAULTY (CVT AVAILABLE) AT BAMNAULI NO TRIPPING
56	11-08-14	04:17	NARELA 66/33kv, 30MVA Tx	11-08-14	08:37	33KV I/C ALSO TRIPPED ON TRIP CKT. FAULTY
57	11-08-14	04:17	NARELA 220/66kv 100MVA Tx-II	11-08-14	10:05	TR. TRIPPED ON WINDING TEMP ALARM, 186,
58	11-08-14	05:18	GOPALPUR 33/11kv, 16MVA Tx-I	11-08-14	10:34	TR. TRIP WITHOUT INDICATION
59	11-08-14	08:05	INDRAPRASTHA POWER 220/33kv 100MVA Tx-I	11-08-14	10:37	TR. TRIPPED ON INSTANTANEOUS EARTH FAULT (LV) , 86
60	11-08-14	22:26	220kv BAMNAULI-PAPPANKALAN-I CKT-II	11-08-14	22:36	AT PAPANALAN-I CKT. TRIPPED ON 86DC, 67A AT BAMNAULI NO TRIPPING
61	11-08-14	22:26	220kv BAMNAULI-PAPPANKALAN-I CKT-I	11-08-14	22:36	AT PAPANALAN-I CKT. TRIPPED ON 86DC, 67A AT BAMNAULI NO TRIPPING
62	11-08-14	23:56	220kv BAMNAULI-PAPPANKALAN-I CKT-I	12-08-14	00:07	AT PAPANALAN -I CKT. TRIPPED WITHOUT INDICATION (CVT AVAILABLE) AT BAMNAULI NO INDICATION
63	11-08-14	23:56	220kv BAMNAULI-PAPPANKALAN-I CKT-II	12-08-14	04:19	AT PAPANALAN -I CKT. TRIPPED WITHOUT INDICATION (CVT AVAILABLE AT BAMNAULI NO INDICATION
64	12-08-14	04:05	INDRAPRASTHA POWER 220/33kv 100MVA Tx-II	12-08-14	04:10	TR. TRIPPED WITHOUT INDICATION
65	12-08-14	11:10	220kv DSIIDC BAWANA-NARELA CKT-I	12-08-14	11:22	AT NARELA CKT. TRIPPED ON ZONE-I, 186 R PHASE, TRIP PHASE R AT DSIIDC CKT. TRIPPED ON ZONE-II, 3 PHASE, 186
66	12-08-14	11:10	220kv DSIIDC BAWANA-NARELA CKT-II	12-08-14	11:19	AT NARELA CKT. TRIPPED ON ZONE-I, 186 R PHASE, TRIP R PHASE AT DSIIDC NO TRIPPING
67	12-08-14	13:24	220kv MEHRAULI - VASANT KUNJ CKT. - II	12-08-14	13:38	AT MEHRAULI CKT. TRIPPED ON O/C, 67NX, 67CM, 186 A&C, AT VASANT KUNJ NO TRIPPING
68	12-08-14	13:24	MEHRAULI 220/66kv 160MVA Tx-I	12-08-14	13:44	TR. TRIPPED ON 186
69	13-08-14	12:42	220KV GAZIPUR - MAHARANIBAGH CKT. -II	13-08-14	19:42	CKT PUT OFF AS CURRENT IN R PHASE DISAPPEARED, JUMPER ALSO SNAPPED.
70	13-08-14	13:05	NARAINA 33kv 10MVAR CAP. BANK-I	13-08-14	14:26	CAPACITOR BANK TRIPPED ON 86
71	15-08-14	09:36	220kv GEETA COLONY-PATPARGANJ CKT -II	15-08-14	09:42	AT GEETA COLONY CKT. TRIPPED ON ACTIVE GROUP -I , START PHASE ABC, DIST PROT, DISTANCE 2.102KMS. AT PATPARGANJ CKT. TRIPPED ON 183, 186, 86X
72	15-08-14	14:28	NARELA 220/66kv 100MVA Tx-II	15-08-14	16:15	66KV B PHASE LA DAMAGED, TR. TRIPPED ON DIFFERENTIAL
73	15-08-14	15:08	220KV SHALIMARBAGH-WAZIRPUR CKT-I	15-08-14	18:29	AT SHALIMARBAGH CKT. TRIPPED ON 86 AT WAZIRPUR NO TRIPPING
74	15-08-14	15:08	220KV SHALIMARBAGH-WAZIRPUR CKT-II	15-08-14	18:29	AT SHALIMARBAGH CKT. TRIPPED ON 86 AT WAZIRPUR NO TRIPPING
75	15-08-14	18:01	220KV SHALIMARBAGH-WAZIRPUR CKT-I	15-08-14	18:28	AT SHALIMARBAGH CKT. TRIPPED WITHOUT INDICATION

SL NO	OCCURRENCE OF BREAK-DOWN		DETAILS OF THE BREAKDOWN	TIME OF RESTORATION		REMARKS
	DATE	TIME		DATE	TIME	
76	15-08-14	18:26	SHALIMAR BAGH 220/33kV 100MVA Tx-I	15-08-14	18:35	33KV I/C-I TRIPPED ON E/F, MASTER TRIP
77	15-08-14	19:25	220kV ROHINI-SHALIMARBAGH CKT-II	15-08-14	19:43	AT AT SHLIMARBAGH CKT. TRIPPED ON DIST PROT, B PHASE, 186 A&B AT ROHINI NO TRIPPING
78	16-08-14	13:52	220kV NARELA - MANDOLA CKT-I	16-08-14	19:50	AT NARELA CKT. TRIPPED ON R PHASE, ZONE-I, DISTANCE 2.81KMS, 186 RELAY AT MANDOLA CB AUTO TRIP, AUTO RECLOSE LOCK, DIST PROT, R PHASE, ZONE 2,3, 86 R&B
79	16-08-14	15:42	220KV GAZIPUR - MAHARANIBAGH CKT. -II	16-08-14	16:42	AT MAHARANIBAGH CKT. TRIPPED ON 186, Y PHASE, 3.6K AMP, B PHSE, 4.1K AMP AT GAZIPUR NO TRIPPING
80	17-08-14	05:30	INDRAPRASTHA POWER 220/33kV 100MVA Tx-II	17-08-14	11:45	TR. TRIPPED WITHOUT INDICATION
81	17-08-14	06:37	220KV WAZIRABAD - MANDOLA CKT-III	17-08-14	07:09	AT WAZIRABAD CKT. TRIPPED ON RYB PHASE TRIP, O/C, E/F, ZONE-I, DIST PROT, AT MANDOLA CKT TRIPPED ON ZONE-I, RBN,
82	17-08-14	06:37	220KV WAZIRABAD - MANDOLA CKT-IV	17-08-14	07:09	AT WAZIRABAD CKT. TRIPPED ON RYB PHSAE, B PHASE NEUTRAL, ZONE-I, AT MANDOLA CKT. TRIPED ON ZONE-I, RBN PHASE
83	17-08-14	06:54	220kV DSIIDC BAWANA-NARELA CKT-I	17-08-14	19:13	AT DSIDC CKT. TRIPPED ON DIST PROT, ALL PHASE, AT NARELA NO TRIPPING
84	17-08-14	08:58	220kV NARELA - MANDOLA CKT-II	17-08-14	09:48	AT NARELA CKT. TRIPPED ON R PHSE, ZONE-I, DISTANCE 14.4KMS AT MANDOLA CKT TRIPPED ON R PHSAE ZONE-I
85	19-08-14	16:40	220kV GEETA COLONY- PATPARGANJ CKT-I	19-08-14	16:54	AT GEETA COLONY CKT. TRIPPED ON MAIN 1, ACTIVE GROUP, START PHASE ABC, TRIP PHASE ABC, DISTANCE PROT, DISTANCE 3.54KMS AT PATPARGANJ CKT. TRIPPED ON ZONE-I, ABC, DISTANCE 3.435KMS.186
86	19-08-14	16:40	INDRAPRASTHA POWER 220/33kV 100MVA Tx-I	19-08-14	17:15	TR. TRIPPED ON INSTANTANEOUS E/F, 86, 33KV I/C TRIPPED WITHOUT INDICATION
87	20-08-14	14:54	220KV BAWANA-SHALIMARBAGH CKT-I	20-08-14	15:59	AT BAWANA CKT. TRIPPED ON 186 AT SHALIMARBAGH NO TRIPPING
88	22-08-14	08:53	WAZIRPUR 220/33kV 100MVA Tx-I	22-08-14	13:02	TR. TRIPPED ON DIFFERENTIAL R&Y PHASE, 86, A&B PHASE
89	22-08-14	08:54	220KV SHALIMARBAGH-WAZIRPUR CKT-I	22-08-14	15:10	AT SHALIMARBAGH CKT. TRIPPED ON DIST PROT. PHASE ABC SOTF, 86 AT WAIZRPUR NO TRIPPING, CB MANUALLY MADE OFF.
90	22-08-14	11:36	NARELA 66/33kV, 30MVA Tx	22-08-14	11:50	33KV I/C TRIPPED ON O/C, 67AX
91	23-08-14	11:45	NARAINA 33kV 10MVAR CAP. BANK-I	23-08-14	14:50	CAPACITOR BANK TRIPPED ON 86
92	24-08-14	07:10	220KV BAWANA-SHALIMARBAGH CKT-II	24-08-14	07:24	CKT. TRIPPED ON AUTO RE-CLOSE, POLE DISCREPANCY CB PRESSURE LOW, AIR PRESSURE LOW, DIST PROT.
93	24-08-14	18:48	220KV WAZIRABAD - MANDOLA CKT-IV	24-08-14	19:22	AT WAZIRABAD CKT. TRIPPED ON GEN TRIP, RYB PHASE, START PY&B PHASAE ,ONE-1 AT MANDOLA CKT. TRIPPED ON Y&B PHASE,ZONE-II
94	25-08-14	09:40	ROHINI 66/11kV, 20MVA Tx-II	25-08-14	11:58	TR. TRIPPED ON 86, E/F, LV SIDE, DIFFERENTIAL RELAY, 11KV I/C-II ALSO TRIP ON WITHOUT RELAY
95	26-08-14	09:52	220kV OKHLA - BTPS CKT. - II	26-08-14	10:15	AT OKHLA CKT. TRIPPED ON O/C, R PHASE AT BTPS NO TRIPPING
96	27-08-14	03:50	INDRAPRASTHA POWER 220/33kV 100MVA Tx-I	27-08-14	07:50	TR. TRIPPED ON REF, LV, HV SIDE REF
97	27-08-14	03:50	INDRAPRASTHA POWER 220/33kV 100MVA Tx-II	27-08-14	04:10	33KV I/C-II TRIPPED WITHOUT INDICATION (LOAD OF BAY NO. 2, 4, 6, 10, 12, 24, 30, 34, 36, 38 &42) WAS AFFECTED.

SL NO	OCCURRENCE OF BREAK-DOWN		DETAILS OF THE BREAKDOWN	TIME OF RESTORATION		REMARKS
	DATE	TIME		DATE	TIME	
98	27-08-14	12:28	RIDGE VALLEY 220/66kV 160MVA Tx-I	27-08-14	13:00	TR. TRIPPED ON 86A,B
99	27-08-14	12:28	220 KV TRAUMA CENTER-RIDGE VALLEY CKT-1	27-08-14	13:00	AT RIDGE VALLEY CKT. TRIPPED WITHOUT INDICATION. AT TRAUMA CENTER NO TRIPPING
100	28-08-14	00:15	220KV GAZIPUR - MAHARANIBAGH CKT. -II	28-08-14	00:26	AT MAHARANIBAGH CKT. TRIPPED ON GEN. TRIP, ZONE-I STARTED, ZONE-3 TRIP, PHT START FUSE FAIL, AT GAZIPUR NO TRIPPING
101	28-08-14	01:30	220kV SARITA VIHAR - BTPS CKT.-I	28-08-14	01:36	AT BTPS CKT. TRIPPED ON LBB PROT. AT SARITA VIHAR NO TRIPPING
102	28-08-14	12:13	220KVBAWANA- ROHINI CKT-I	28-08-14	12:25	AT BAWANA CKT. TRIPPED ON B & C ZONE AT ROHINI NO TRIPPING
103	28-08-14	14:48	PARKSTREET 220/33kV 100MVA Tx-II	28-08-14	15:45	TR. TRIPPED ON O/C, 86A&B, 51A ALONGWITH 33KV I/C-II ON 51, O/C, 86 TRIPPING RELAY SUPPLY OF 33KV MOTIA KHAN CKT. -I & II AND 33KV SHANKAR ROAD AFFECTED
104	28-08-14	18:17	220kV BAMNAULI-NAJAFGARH CKT-I	28-08-14	18:34	AT NAJAFGARH CKT. TRIPPED ON 186, 186 AT BAMNAULI NO TRIPPING
105	29-08-14	09:25	GAZIPUR 220/66kV 100MVA Tx-II	29-08-14	09:45	TR. TRIPPED WITHOUT INDICATION
106	29-08-14	10:20	GAZIPUR 220/66kV 100MVA Tx-II	29-08-14	13:40	TR. TRIPPED WITHOUT INDICATION
107	29-08-14	19:20	INDRAPRASTHA POWER 220/33kV 100MVA Tx-II	29-08-14	19:37	33KV I/C-II TRIPPED WITHOUT INDICATION
108	29-08-14	19:20	INDRAPRASTHA POWER 220/33kV 100MVA Tx-I	29-08-14	19:47	TR. TRIPPED ON HV, LV, REF , 86
109	29-08-14	20:52	KANJHAWALA 220/66kV 100MVA Tx-I	29-08-14	21:26	TR. TRIPPED ON 86
110	29-08-14	20:52	KANJHAWALA 220/66kV 100MVA Tx-II	29-08-14	21:52	TR. TRIPPED ON 86
111	29-08-14	20:52	220kV BAWANA - KANJHAWALA CKT-2	29-08-14	21:52	AT KHANJAWALA CKT. TRIPPED ON TRIP CKT. HALF CKT .FAULTY AT BAWANA NO TRIPPING
112	29-08-14	20:52	220kV BAWANA - KANJHAWALA CKT	29-08-14	21:26	AT BAWANA CKT. TRIPPED ON DIST PROT, ZONE-I, DISTANCE 4.52KMS AT KHANJAWANA NO TRIPPING
113	29-08-14	21:01	MUNDKA 400/220KV 315MVA ICT-III	30-08-14	01:56	ICT TRIPPED ALONGWITH CB 41352
114	30-08-14	11:40	GAZIPUR 220/66kV 100MVA Tx-II	30-08-14	13:17	TR. TRIPPED WITHOUT INDICATION, TO AVOID OVERLOADING 66KV KONDLI CKT. MADE OFF AND MADE ON AT AT 11.52HRS.
115	30-08-14	12:34	220kV WAZIRABAD - KASHMEREGATE CKT-I	30-08-14	14:32	CKT MADE OFF AS IT IS REPORTED THAT A MAN CLIMBED ON TOE TOWER
116	30-08-14	12:34	220kV WAZIRABAD - KASHMEREGATE CKT-II	30-08-14	14:32	CKT MADE OFF AS IT IS REPORTED THAT A MAN CLIMBED ON TOE TOWER
117	30-08-14	14:01	220kV BAWANA - KANJHAWALA CKT	30-08-14	14:22	AT BAWANA CKT. TRIPPED ON DISTPROT, , C PHASE ZONE-II AT KHANJAWALA NO TRIPPING CKT. MADE OFF MANUALLY
118	30-08-14	14:01	220kV KANJHAWALA-NAJAFGARH CKT-2	30-08-14	14:24	AT KHANJAWALA CKT. TRIPPED ON MAIN I , MAIN -II, RYB PHASE AT NAJAFGARH CKT. TRIPPED ON TRIP PHASE, 186
119	30-08-14	14:24	220kV GAZIPUR - BTPS CKT	30-08-14	18:02	AT GAZIPUR CKT. TRIPPED ON DIRECTIONAL O/C, TRIP CKT. FAULTY, 86, VT FUSE FAILURE INDICATION AT BTPS CKT. TRIPPED ON Y PHASE, E/F, ZONE-I, DISTANCE 6.6KMS.
120	30-08-14	15:10	220KV GAZIPUR - MAHARANIBAGH CKT. -I	30-08-14	15:13	AT GAZIPUR CKT. TRIPPED ON DIST PROT, ZONE-I AT MAHARANI BAGH NO TRIPPING
121	30-08-14	17:01	GAZIPUR 220/66kV 100MVA Tx-II	30-08-14	18:10	TR. TRIPPED WITHOUT INDICATION
122	31-08-14	04:02	NARELA 66/33kV, 30MVA Tx	31-08-14	04:09	33KV I/C-I TRIPPED ON E/F DUE TO AIR KHAMPUR
123	31-08-14	15:05	220KV GAZIPUR - MAHARANIBAGH CKT. -I	31-08-14	15:15	AT GAZIPUR CKT. TRIPPE DON POLE DISCRIPENCY AT MAHARANI BAGH NO TRIPPING
124	31-08-14	16:47	220KV GAZIPUR - MAHARANIBAGH CKT. -I	31-08-14	17:45	AT GAZIPUR CKT. TRIPPED WITHOUT INDICATION AT MAHARANIBAGH NO TRIPPING

SL NO	OCCURRENCE OF BREAK-DOWN		DETAILS OF THE BREAKDOWN	TIME OF RESTORATION		REMARKS
	DATE	TIME		DATE	TIME	
125	31-08-14	20:58	220KV GAZIPUR - MAHARANIBAGH CKT. -I	31-08-14	21:16	AT GAZIPUR CKT. TRIPPED WITHOUT INDICATION AT MAHARAIBAGH NO TRIPPING
126	31-08-14	20:58	GAZIPUR 220/66kV 100MVA Tx-I	31-08-14	21:16	TR. TRIPPED WITHOUT INDICATION DC LEAKAGE SUSPECTED
127	31-08-14	20:58	GAZIPUR 220/66kV 100MVA Tx-II	31-08-14	21:16	TR. TRIPPED WITHOUT INDICATION DC LEAKAGE SUSPECTED
128	31-08-14	21:55	GAZIPUR 220/66kV 100MVA Tx-II	01-09-14	17:50	TR. MADE OFF DUE TO PROBLEM AT SUPERVISION RELAY CKT. LEAKAGE
129	31-08-14	22:56	220KV GAZIPUR - MAHARANIBAGH CKT. -I	01-09-14	15:30	AT GAZIPUR CKT. TRIPPED WITHOUT INDICATION AT MAHARANIBAGH NO TRIPPING

20 DETAILS OF UNDER FREQUENCY RELAY OPERATIONS IN DELHI POWER SYSTEM DURING THE MONTH OF AUGUST 2014

DATE	S. N.	TIME		Name of Grid	NAME OF AFFECTED FEEDERS	MODE	LOAD RELIEF IN MW
		OUT	IN				
				NIL			